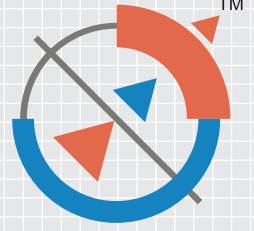


GEOSPATIAL WORLD FORUM



THEME
**GEOSPATIAL INDUSTRY
AND WORLD ECONOMY**

23 - 27 APRIL 2012
RAI CONVENTION CENTRE
AMSTERDAM, THE NETHERLANDS



STRATEGIC SPONSOR



PRINCIPAL SPONSOR



CO-ORGANISER



CORPORATE SPONSORS



ORGANISER



STRATEGIC PARTNERS



ASSOCIATE SPONSORS



JOIN THE GEOSP

CO-SPONSORS



Netherlands Space Office



STRATEGIC INSTITUTIONAL PARTNERS



United States Geospatial Intelligence Foundation



ASSOCIATE PARTNERS



MEDIA PARTNERS



ATIAL CARAVAN

Index

CONTENT	PAGE NO.
Sponsors and Partners	2 & 3
Advisory Board and Programme Committee	5
About Geospatial World Forum & Theme	6
Scope and Objectives	7
Geospatial Market Dynamics	8
Programme Layout	9
Guest & Plenary Speakers	10
Chairpersons and Moderators	11
Exchange Forum on Land Administration for Sustainable Economic Development	12
Exchange Forum on Public-Private Partnership for Spatial Data Infrastructure	13
Exchange Forum on Earth Observation Systems & Nation Building	14
Exchange Forum on Evolving Industry-Institution Network for Capacity Building	15
Programme Schedule	16 & 17
Symposia: Energy and Water	18
Symposia: Construction & Infrastructure and Business Enterprises	20
Symposia: Defence & Intelligence	21
Symposia: Mining & Exploration	22
Seminars: GIS Ready Information from Imagery and 5D Modelling	23
Seminars: Real Time Geoinformatics Live Geography and European Digital Agenda	24
Seminars: Nextgen Standards & Interoperability and Mobile Mapping	25
Seminars: Open Source, Cloud Computing and Cyber Infrastructure & Social Networking	26
Technical sessions / Poster Session / Industry Technology Tracks	27
Geospatial World Excellence Awards	28
Exhibition and Registration Details	29
General Information & Contacts	30



Advisory Board

Prof. Ian Dowman

Emeritus Professor of Photogrammetry and Remote Sensing & Editor-Europe Geospatial World, UK

Rob van de Velde

Director, Geonovum, The Netherlands

Kees de Zeeuw

Director, Cadaster, Land Registry & Mapping Agency, The Netherlands

Sanjay Kumar

CEO, Geospatial Media and Communications, India

Prof. Orhan Altan

President, International Society for Photogrammetry and Remote Sensing (ISPRS)

Alessandro Annoni

Head, Spatial Data Infrastructure Unit, Joint Research Centre, European Commission, Italy

Jan Willem van Eck

President, Geo-Information, The Netherlands

Prof. Henk J Scholten

CEO, Geodan, The Netherlands

Prof. Josef Strobl

Director, Centre for Geoinformatics University of Salzburg (Z_GIS), Austria

Dr. R Siva Kumar

CEO, National Spatial Data Initiative Department of Science and Technology, India

Prof. Dr. Ing. Christian Heipke

Institute for Photogrammetry and Geoinformation (IPI), Leibniz University Germany

Prof. Karl Donert

President, European Association of Geographers, UK

Mark Reichardt

President & CEO
Open Geospatial Consortium, USA

Prof. Milan Konečný

Professor, Masaryk University, Czech Republic

Prof. Abbas Rajabifard

President, Global Spatial Data Infrastructure Association

Aida Opoku Mensah

Director-ICTs & S&T Division
United Nation Economic Commission for Africa, Ethiopia

Bryn A Fosburgh

Vice President & General Manager, Trimble Navigation, USA

Dr. Derek Clarke

Chief Director – Survey and Mapping & National Geospatial Information, Department of Rural Development & Land Reform South Africa

Jack Dangermond

Founder and President, Esri, USA

Juergen Dold

President, Hexagon Geosystems, Switzerland

Kamal K Singh

Chairman and Managing Director, Rolta India

Matthew O'Connell

Chief Executive Officer, GeoEye, USA

Ed Parsons

Geospatial Technologist, Google, USA

Dr. Asep Karsidi

Head, Bakosurtanal, Indonesia

Chris Holcroft CGeog (GIS)

Director & CEO
Association for Geographic Information, UK

Dr. Shailesh Nayak

Secretary, Ministry of Earth Sciences & Chairman, Earth Commission Government of India

Swarna Subba Rao

Surveyor General of India, Survey of India

Dr. Luiz Paulo Souto Fortes

Director of Geosciences
Instituto Brasileiro de Geografia e Estatística - IBGE, Brazil

Datuk Prof. Sr Dr. Abdul Kadir Bin Taib

Director General
Department of Survey and Mapping (JUPEM) Malaysia

Eng. Mohammed Al Zaffin

Director- Information Technology
Dubai Municipality, UAE

Prof. Fraser Taylor

President, International Steering Committee for Global Mapping (ISCGM), Canada

Dr. Khalid Al Haidan

Director, Central Informatics Organisation Kingdom of Bahrain

Keith Masback

President, United States Geo-Intelligence Foundation (USGIF), USA

Dr. Ger Nieuvoort

Director, Netherland Space Office
The Netherlands

Camille A.J. van der Harten

Director
GeoBusiness Nederland

Alain De Taeye

Member of the Management Board
TomTom
The Netherlands

Programme Committee

Chairperson

Kees de Zeeuw

Director, Cadaster, Land Registry & Mapping Agency, The Netherlands

Members

Dr. Zaffar Sadiq Mohamed-Ghouse

Lead Consultant-Spatial Information & Practice Leader - Spatial Database Management & Mapping, Sinclair Knight Merz (SKM), Australia

Valéria Oliveira Henrique de Araújo

Directorate of Geosciences Instituto Brasileiro de Geografia e Estatística - IBGE, Brazil

Adam C. Denman

Vice President & Managing Director (Europe) Intermap Technologies, Germany

Dr. Jinsoo You

Chair, Open Geospatial Consortium (OGC) Korea, South Korea

Norman Banks

CEO
Southern Mapping Company, South Africa

Dr. M. M. Yagoub

Frm, Director, Master Program of Remote Sensing and GIS and Frm, Head, Geography Department, Associate Professor of Remote Sensing and GIS, UAE University, UAE

Eng Khalid A. Al Hammadi

Chief GIS, Central Informatics Organisation Kingdom of Bahrain

Dr. Tania Maria Sausen

Director, "Brazil Campus" of the Regional Centre for Education in Space Science and Technology Education in Latin America and The Caribbean, Brazil

Dr. Hussein Farah

Director General, Regional Centre for Mapping of Resources for Development Kenya

Esteban Tohá González

Executive-Secretary
National System of Coordination of Territorial Information (SNIT)
Chile

Dr. Hrishikesh Samant

Associate Professor, St. Xavier's College and Honorary Editor, Geospatial Media and Communications, India

Anamika Das

Product Manager - Conferences
Geospatial Media & Communications, India

Megha Datta

Senior Manager - Partner Alliances
Geospatial Media & Communications, India



Geospatial World Forum

As the premium global geospatial industry event, Geospatial World Forum will bring the stakeholders — solution providers, policy makers as well as users — to a single platform, providing unparalleled opportunities for discussion, debate and interaction. Geospatial World Forum is a platform of convergence for all stakeholders of global geospatial community, policy makers and end users of geospatial information. It is a confluence of a variety of activities in the form of plenary, symposia, seminars, workshops, panel discussions, exchange forums - covering the vast gamut of technology,

application, policy, user cases studies from the region and from across the world. True global character and composition of this event has attracted attention from several countries to host this event. Responding to the recommendations of our advisory Board and suggestions from our partners, Geospatial Media and Communications has taken this initiative to organize Geospatial World Forum in Amsterdam, The Netherlands in 2012.

GEOSPATIAL
WORLD
FORUM 

2000+ Professionals

500+ Organisations

400+ Speakers

100+ Countries

50+ Thematic Sessions

THEME Geospatial Industry & World Economy

The road to recovery from the Great Recession is proving to be long, winding and rocky. After a year of fragile and uneven recovery, growth of the world economy is now decelerating on a broad front. There is an immediate need to deal with effects of job losses and high foreclosure rates on communities. Revitalizing the economy is a formidable task that will require innovative approaches to challenges like modernizing energy generation and rebuilding the nation's infrastructure. Unlike previous recessions, government and businesses have a powerful technology for dealing with diagnosing and treating the ailing economy at the local, national and global level. Geospatial technologies have evolved beyond the organizational level to become a framework for managing and analyzing data, modeling scenarios, supporting decision making & disseminating information. Economy developers need effective decision-making tools that help them conduct analysis, display and disseminate results and make informed decisions about where to locate new businesses or grow existing ones. Geospatial technology has proven to be powerful and effective in delivering these functionalities to help economy developers sustain economic recovery and growth.



Scope and Objectives

CONNECTING COMMUNITIES



Policy Communities |
 User Communities |
 Technology Communities |
 Academic Communities



Decision Makers |
 Technology Solution
 Providers | Academia | Users

BUSINESS DEVELOPMENT



GLOBAL OUTREACH



Asia Pacific | Middle East |
 Africa | Latin America |
 Europe | North America



Symposia | Seminars |
 Exchange Forums | Workshops
 | Technical Sessions |
 Technology Tracks

KNOWLEDGE SHARING

Geospatial Industry shall be the next frontier in information revolution



"Geospatial encompasses in itself anything and everything that is geo-referenced and spatial in its characteristics and content. And so as 'geospatial industry' is anything and everything that is associated with science, technology and applications of geospatial data"



Business drivers of Geospatial Industry

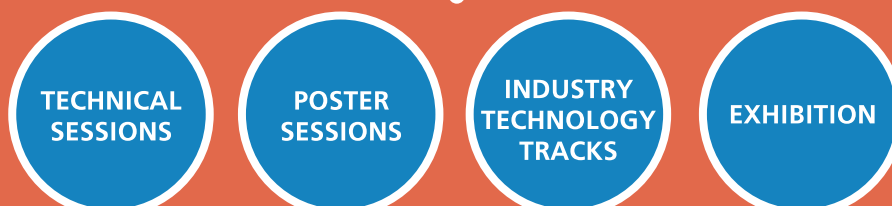
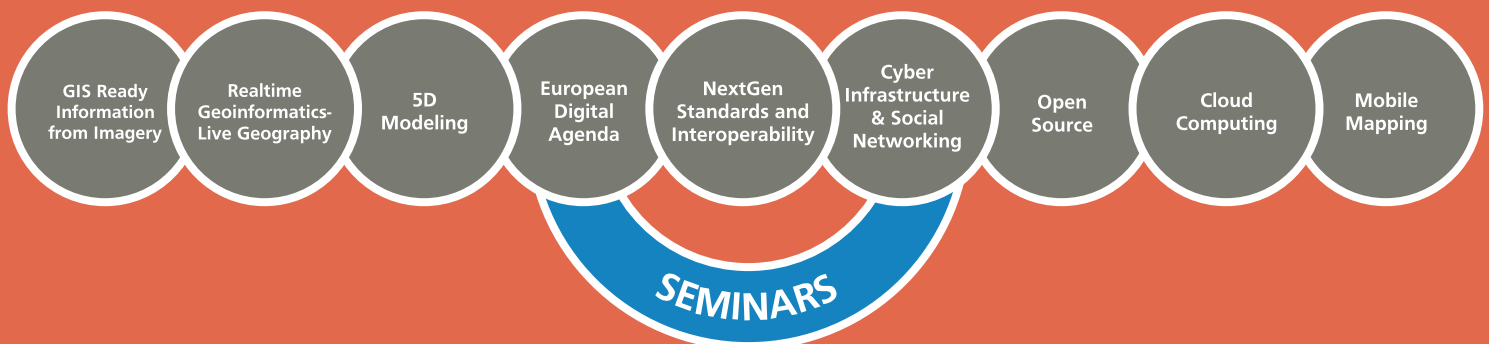
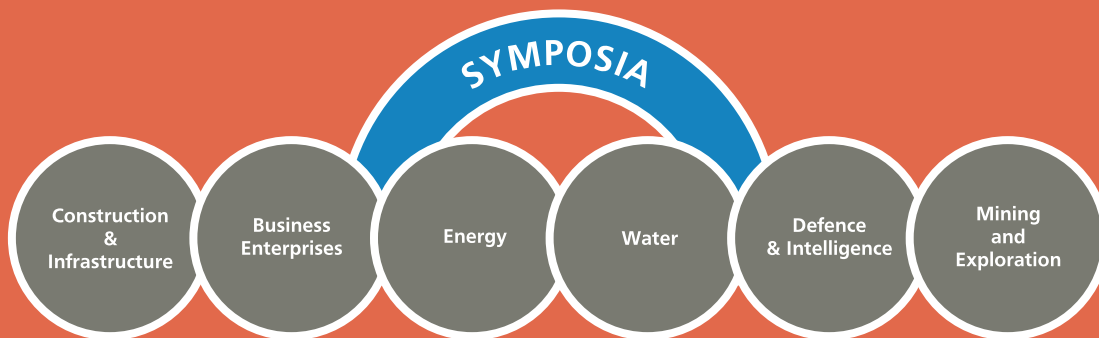
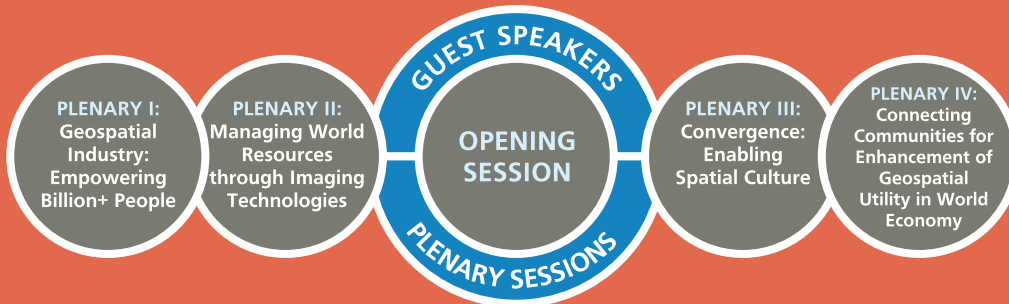
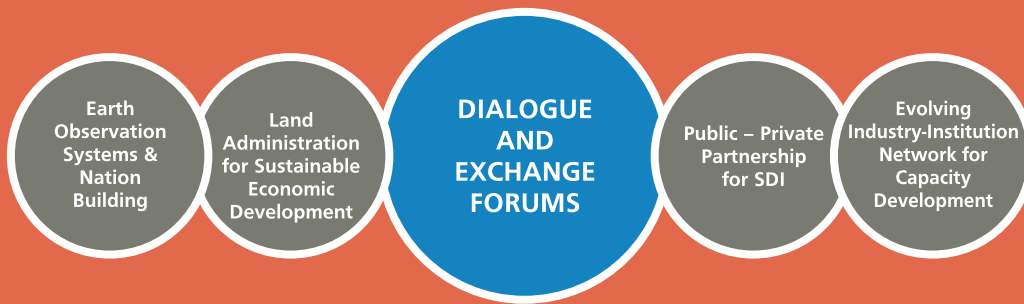
- Data Type**
 - Navigation > Cadastral > 3D Imagery > Topographical
- Technologies**
 - Telecommunications > Geospatial > Mobile devices
 - > Web > Sensors > Cloud Computing
- Applications**
 - Engineering > Infrastructure Land & Real Estate > Utilities
 - > Defence & Security > Natural Resource Management
 - > Enterprise & Business Processes > Municipality & Local Governance > Public Safety > LBS & Consumer Applications



Geospatial Industry shall be \$100 bn by 2015

'Number of geospatial users passed 100 million and the amount of money moving in the market is nearing \$40bn. Growth in the next decade requires the introduction of continent-wide data with higher geospatial accuracy. Fuelled by location enabled consumer markets and prospects of 20% + growth of professional markets in emerging economics including China, India, Brasil, Russia, geospatial industry shall touch \$100 bn by 2015.'

PROGRAMME LAYOUT



Guest & Plenary Speakers



Dr. A P J Abdul Kalam
11th President
Republic of India



Dorine Burmanje
Chair Executive Board
Cadastre, Land Registry
& Mapping Agency
The Netherlands



**Prof. Jacqueline
McGlade**
Executive Director
European Environment Agency
Denmark



**Dr. Wubbo Johannes
Ockels**
Professor of Aerospace for
Sustainable Engineering and
Technology Delft University
The Netherlands



Dr. F J Radermacher
Director, Forschungsinstitut fuer
anwendungsorientierte
Wissensverarbeitung/n (FAW/n)
Germany



Steven W Berglund
President and CEO
Trimble Navigation
USA



K K Singh
Chairman and Managing Director
Rolta
India



Jack Dangermond
Founder and President
Esri
USA



Ola Rollén
CEO, President and Director
Hexagon AB
Sweden



Greg Bentley
CEO
Bentley
USA



Matthew O'Connell
CEO, President and Director
GeoEye
USA



Todd Oseth
President and CEO
Intermap Technologies
USA



Dr. Steven Hagan
Senior Vice President
Server Development
Technologies, Oracle
USA



Alain De Taeye
Member - Management Board
TomTom
The Netherlands



A J Baayen
Managing Director
Deltares
The Netherlands



David Schell
Chairman
Open Geospatial Consortium
USA



Mitrasen Bhikajee
Deputy Executive Secretary
Intergovernmental Oceanographic
Commission, UNESCO
France



Jean-François Rocchi
President
BRGM
France



Paul Cheung
Director
United Nations Statistics Division
USA



Yoichi Sugimoto
President and CEO
PASCO Corporation
Japan



David Maguire
Vice Chancellor
Greenwich University
UK



Prof. Józef Dubinski
President
World Mining Congress
Poland



**Dr. B V R Mohan
Reddy**
Chairman & Managing Director
Infotech Enterprises
India



Kanwar Chaddha
CMO & Member of the
Board of Directors
CSR & Founder
SiRF Technologies
USA

Chairpersons and Moderators



Ingrid Vanden Berghe
Administrator-General
National Geographic Institute
Belgium



Dr. Vanessa Lawrence CB
Director General and
Chief Executive
Ordnance Survey, UK



Dr. Shailesh Nayak
Secretary, Ministry of Earth Sciences
Chairman, Earth Commission
Government of India



Kees de Zeeuw
Director
Cadastral, Land Registry &
Mapping Agency
The Netherlands



Alessandro Annoni
Head, Spatial Data
Infrastructure Unit
Joint Research Centre
European Commission, Italy



Prof. Ian Dowman
Emeritus Professor of
Photogrammetry and Remote
Sensing & Editor-Europe
Geospatial World, UK



Prof. Henk Scholten
CEO
Geodan
The Netherlands



Keith Masback
President
United States Geo-Intelligence
Foundation (USGIF)
USA



Jan Willem van Eck
Director of Strategy, Esri Nederland &
President, Geo-Informatie Nederland
The Netherlands



Prof. Karl Donert
President
European Association of
Geographers
UK



Prof. Josef Strobl
Director, Centre for
Geoinformatics
University of Salzburg
Austria



Dr. Ing. Christian Heipke
Managing Director, Institute of
Photogrammetry and
GeoInformation Leibniz
University of Hannover, Germany



M Christian Braux
Head - Mineral Resources
BRGM
France



Mark Reichardt
President and CEO
Open Geospatial Consortium
USA



Prof. Orhan Altan
President
International Society for
Photogrammetry & Remote Sensing
(ISPRS)



**Prof. Dr. Ir. A.K.
(Arnold) Bregt**
Professor Geo-information Science
Centre for Geo-Information
Wageningen University
The Netherlands



Dr. Ir. Martien Molenaar
Professor, Geoinformatics and
Spatial Data Acquisition,
Geo-Information Science and
Earth Observation (ITC)
The Netherlands



Swarna Subba Rao
Surveyor General of India
Survey of India



Mag. Dr. Georg Gartner
Research Group Cartography
Department of Geoinformation
Vienna University of Technology
Austria & President International
Cartography Association (ICA)



**Prof. Gottfried
Konecny**
Emeritus Professor-
Photogrammetry & RS
& Former Head - Institute of
Photogrammetry &
Geoinformation,
Leibniz Universität Hannover,
Germany



Arnulf Chirstl
President
OS Geo

Chairperson



Kees De Zeeuw
 Director
 Cadastre, Land Registry and Mapping Agency
 The Netherlands



- Discuss attributes of some 'best practices' in land administration systems around the world where support in sustainable economic development is concerned
- Bring out the challenges faced while implementing such systems in a transparent and accepted way on a local level in support of improving investment climate
- Outline and discuss ways to overcome these challenges and
- Determine processes that can lead to improvements in land administration systems in respective countries

*Please note that participation to this Pre-Conference Forum, scheduled for April 23rd is on invitation basis only. For queries please contact **Ms. Megha Datta at megha@geospatialmedia.net***

Speakers



Y.Bhg. Dato' Haron Bin Abdul Kader
 Director-E-Tanah Project Team
 Ministry of Natural Resources & Env, Malaysia



R P R Rajapaksha
 Land Commissioner General
 Land Commissioner General's Department
 Sri Lanka



Eng. Didier G Sagashya
 Deputy Director General
 Rwanda Natural Resources Authority, Rwanda



Alexander Gonzalez
 Director World Bank Project
 Land Administration
 Costa Rica



Bryn A Fosburgh
 Vice President and General Manager
 Trimble Navigation
 USA



Vo Anh Tuan
 Deputy Director VLAP
 General Department of Land Administration, Vietnam



Anna Namhindo
 Director of Survey and Mapping
 Ministry of Lands
 Namibia



Juergen Dold
 President
 Hexagon Geosystems
 Switzerland



Margrét Hauksdóttir
 Deputy Director General
 Registers Iceland
 Iceland



Sedat Bakici
 Director General
 Directorate Geographical Infosystems
 Turkey



Eng. Dr. Prof. Moha El-Ayachi
 Head - Geodesy & Surveying
 School of Geomatic Sciences & Surveying Engineering, Morocco



Prof. Apostolos Arvanitis
 President and Managing Director
 KTIMATOLOGIO S.A.
 (Hellenic Cadastre), Greece



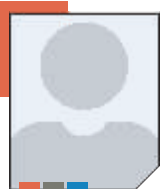
Dr. Dimitris Rokos
 Director of Planning & Investments
 KTIMATOLOGIO S.A.
 (Hellenic Cadastre), Greece



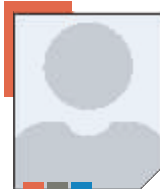
Silke Handley
 Economic Affairs Officer,
 Trade & Sustainable Land Management, UNECE
 Switzerland



Daniel Eriksson
 Director & Senior Head
 Information Management
 Geneva International Centre for Humanitarian Demining, Switzerland



Tony L Mwanalushi*
 Assistant Surveyor-General
 Survey Department
 Ministry of Lands, Zambia



Hernan Bianchi Benguria*
 Head of Department of Territorial Studies, National Property Division
 Ministry of National Property
 Chile



Prof. Dr. Jaap Zevenbergen
 ITC
 The Netherlands



Dr. Selassie D. Mayunga
 Director General, Ministry of Lands, Housing and Human Settlements Development
 Tanzania



Nathalie Marthe Bismuth
 General Manager
 IGN France International
 France

* Tentative Confirmations



Chairperson



Alessandro Annoni
Head, Spatial Data Infrastructure Unit
Joint Research Centre, European Commission
Italy



- Bridge the gap between the public and private entities who are key stakeholders of PPP model for SDIs
- Brainstorm on viable financial models of PPP for SDIs
- Identify the road blocks in achieving success within these models
- Identify ways and means of overcoming the above mentioned road blocks
- Identify the unique regional or country specific characteristics of SDI that can lend to ease of development of PPP
- Identify steps that government agencies can take to invite or encourage Private Sector participation in SDI
- Outline benefits for private sector to contribute and participate in SDI

Speakers



Dr. R Siva Kumar
Chief Executive Officer
National Spatial Data Infrastructure
India



Dr. Luiz Paulo Souto Fortes
Director of Geosciences
Instituto Brasileiro de Geografia e Estatística - IBGE, Brazil



Hugo DeGroof
DG Environment-F-4 & Chief Scientist,
Research & Innovation Unit
European Commission
Belgium



Dr. Derek Clarke
Chief Director: National Geospatial
Information & Surveys and Mapping
Department of Rural Development
& Land Reform, South Africa



Maarten van Gool
Managing Director Licencing
Business Unit
TomTom
The Netherlands



Rob van de Velde
Director
GeoNovum
The Netherlands



Camille AJ van der Harten
Director, GeoBusiness Nederland
The Netherlands



Dr. Khalid Al Haidan
Director
Central Informatics Organisation
Kingdom of Bahrain



Daniel Shannon
Sr. Program Manager
Telus
USA



Mladen Stojic
Senior Vice President
ERDAS, Intergraph
USA



Steven Ramage
Executive Director Marketing
and Communications
OGC, Norway



Fuziah Bt Abu Hanifah
President and Managing Director
Director Malaysia Centre for
Geospatial Data Infrastructure
(MaCGDI), Malaysia



Ed Parsons
Geospatial Technologist
Google
UK



Jean-Philippe Grelot
Deputy Director General
IGN France
France



Ivan DeLoatch*
Executive Director
Federal Geographic Data Committee
USA



Bruce Thompson
Chief Information Officer
Corporate and Business Services
Department of Sustainability and
Environment, Australia



Antti Jakobsson
Programmes Manager
EuroGeographics
Belgium



Olaf Magnus Ostensen
Director
Norwegian Mapping Authority
Norway



Dr. Robert F Austin
Enterprise Applications
Integration Manager
Technology and Innovation
City of Tampa, USA



Dr. Hiroshi Murakami*
Director General
Geospatial Information Department
Geospatial Information Authority
Japan

Chairperson



Prof. Ian Dowman
 Emeritus Professor of
 Photogrammetry and Remote
 Sensing & Editor-Europe
 Geopatial World, UK



- A unique platform for dialogue amongst various stakeholders of the Earth observation community
- Understanding of policies and the connectivity with national programmes and projects
- Sharing of knowledge and learning from best practices and policies
- Capacity development for utilization and deployment of Earth observation projects and programmes
- Advocacy for maximizing benefits of Earth observation for nation building

Please note that participation to this Pre-Conference Forum scheduled for April 23rd is on invitation basis only. For queries please contact Ms. Vaishali Dixit at vaishali@geospatialmedia.net

Speakers



Prof. Dr. Ir. Tom Veldkamp
 Rector
 ITC
 The Netherlands



Prof. Orhan Altan
 President
 International Society for
 Photogrammetry &
 Remote Sensing
 (ISPRS)



Dr. Somchet Thinaphong
 Chairman, Geo-Informatics
 and Space Technology
 Development Agency (GISTDA)
 Thailand



Dr. S O Mohammed
 Director General & Chief Executive
 National Space Research and
 Development Agency (NASRDA)
 Nigeria



Lt. Col. Ali Al Shehhi
 Ground Station Manager
 Space Reconnaissance Centre
 UAE



Dr. Geoff Sawyer
 Secretary General
 European Space Agency
 Belgium



Dr. Gunter Scherier
 Deputy Head DLR
 German Remote Sensing
 Data Centre, Germany



John Hornsby
 Senior Director - Geospatial Strategy
 MDA Corporation
 Canada



José Achache
 Former Director
 The Group on Earth Observations
 (GEO) Secretariat
 Switzerland



Dr. Ger Nieuvoort
 Director
 Netherland Space Office
 The Netherlands



Katherine Sandford
 General Manager
 Utilities Field Solutions Group
 Trimble
 USA



Dr. Beverley J Adams*
 Principal
 Beverley Adams Consulting
 UK



Chairperson



Prof. Karl Donert
President
European Association of
Geographers, UK

CO-ORGANISER



- Identify the present and future HR need of the Industry
- Understand and bring about clarity with regards to the skill sets required by the Industry
- List the present day offerings from the Institutions – and pin point the lacunae from a curriculum development point of view
- Identify regional constraints on capacity development
- Exchange of ideas between Industry and Institutions leading to relevance and marketability of the trained human resource
- Evolve a streamlined process for the offer of internships by Industry leading to live project experience for the trainees
- Evolve mechanisms for the Endorsement of curricula by Industry
- Offer a platform for networking between the Trained Human Resource Producers (Institutions) and the Geospatial Industry

Guest Speaker

Speakers



Dr. A P J Abdul Kalam
11th President
Republic of India



Jack Dangermond
Founder and President
Esri
USA



Prof. Henk Scholten
CEO
Geodan
The Netherlands



Prof. Josef Strobl
Director, Centre for
Geoinformatics
University of Salzburg
Austria



Prof. Dr. Ir. Tom Veldkamp
Rector
ITC
The Netherlands



Dr. Ing. Christian Heipke
Managing Director
Institute of Photogrammetry
and Geoinformation Leibniz
University of Hannover, Germany

START SHAPING CHANGE WITH HEXAGON AT GEOSPATIAL WORLD FORUM 2012

DON'T MISS ERDAS, INTERGRAPH®, LEICA GEOSYSTEMS AND Z/I IMAGING!

Join Hexagon, proud Corporate Sponsor of Geospatial World Forum 2012, and take advantage of opportunities to learn how Hexagon technologies can help you stay one step ahead of a changing world:

- Visit ERDAS, Intergraph®, Leica Geosystems and Z/I Imaging at Booths 24 and 17 and discover how you can leverage Hexagon's technologies to increase productivity, enhance quality and make faster, better operational decisions
- Hear Hexagon President and CEO Ola Rollén's visionary plenary address on Tuesday

Learn more at www.hexagon.com.

Join us for Hexagon 2012,
4-7 June 2012, in Las Vegas, NV!
www.hexagonconference.com



Programme Schedule



23 April, 2012 Pre-Conference Agenda (Participation by invitation only)										
08:00 - 18:00	Exchange Forum					Exchange Forum				
	Land Administration for Sustainable Economic Development					Earth Observation Systems and Nation Building				
24 April, 2012 Main Conference Agenda										
Time (in hrs)	Hall 1									
0900 - 1030	Opening Sesion									
1030 - 1115	Networking Coffee / Tea Break									
1115 - 1300	Plenary 1 Geospatial Industry: Empowering Billion+ People									
1300 - 1400	Lunch									
1400 - 1600	Plenary 2 Managing World Resources through Imaging Technologies									
1600 - 1730	Inauguration of Exhibition and Visit to Exhibition									
1700 - 1900	Beer Break									
1900 - 2100	Award Nite followed by Dinner Reception									
25 April, 2012										
Time (in hrs)	Hall 1	Hall 2	Hall 3	Hall 4	Hall 5	Hall 6	Hall 7	Hall 8	Hall 9	Hall 10
0900 - 0945	Guest Address									
0945 - 1130	Plenary 3 Convergence: Enabling Spatial Culture									
1130 - 1300	Networking Coffee / Tea in Exhibition Area									
1300 - 1400	Lunch									
1400 - 1530	Exchange Forum Evolving Industry Institution Network for Capacity Development	Symposium Energy	Symposium Defence & Intelligence	Symposium Water	Symposium Business Enterprises	Symposium Construction and Infrastructure	Symposium Mining & Exploration	Seminar Open Source	Seminar Mobile Mapping	Technology Track
1530 - 1600	Networking Coffee / Tea Break in Exhibition Area									
1600 - 1800	Exchange Forum Evolving Industry Institution Network for Capacity Development	Symposium Energy	Symposium Defence & Intelligence	Symposium Water	Symposium Business Enterprises	Symposium Construction and Infrastructure	Symposium Mining & Exploration	Seminar Open Source	Seminar Mobile Mapping	Technical Session
26 April, 2012										
Time (in hrs)	Hall 1	Hall 2	Hall 3	Hall 4	Hall 5	Hall 6	Hall 7	Hall 8	Hall 9	Hall 10
0900 - 0945	Guest Address									
0945 - 1130	Plenary 4 Connecting Communities for Enhancement of Geospatial Utility in World Economy									
1130 - 1300	Networking Coffee / Tea in Exhibition Area									
1300 - 1400	Lunch									
1400 - 1530	Exchange Forum Public - Private Partnership for SDI	Symposium Energy	Symposium Defence & Intelligence	Symposium Water	Symposium Business Enterprises	Symposium Construction and Infrastructure	Symposium Mining & Exploration	Seminar RealTime Geoinformatics - Live Geography	Technical Session Photogrammetry	Technology Track
1530 - 1600	Networking Coffee / Tea Break in Exhibition Area									
1600 - 1800	Exchange Forum Public - Private Partnership for SDI	Symposium Energy	Symposium Defence & Intelligence	Symposium Water	Symposium Business Enterprises	Symposium Construction and Infrastructure	Symposium Mining & Exploration	Seminar RealTime Geoinformatics - Live Geography	Technical Session 3D Modeling	Technical Session Cartography
27 April, 2012										
Time (in hrs)	Hall 1	Hall 2	Hall 3	Hall 4	Hall 5	Hall 6	Hall 7	Hall 8	Hall 9	Hall 10
0900 - 1030	Exchange Forum Public - Private Partnership for SDI	Seminar European Digital Agenda	Seminar 5D Modelling	Seminar Cloud Computing	Seminar GIS Ready Information from Imageries	Seminar Cyber Infrastructure & Social Networking	Seminar NextGen Standards & Interoperability	Technology Track	Technical Session	Technical Session
1030 - 1100	Networking Coffee / Tea Break									
1100 - 1230	Exchange Forum Public - Private Partnership for SDI	Seminar European Digital Agenda	Seminar 5D Modelling	Seminar Cloud Computing	Seminar GIS Ready Information from Imageries	Seminar Cyber Infrastructure & Social Networking	Seminar NextGen Standards & Interoperability	Technical Session Environmental Management	Technical Session	Technical Session
1230 - 1330	Valedictory Session									

This is a tentative agenda.
For updated information, please visit:

www.geospatialworldforum.org

Speakers



Adri de la Ray
GIS Manager
ESKOM South Africa



Joep Luijten
Senior Manager, Technology Services
Geographic Information Systems
Capgemini, Belgium



Jack Verouden
Data Management & Geomatics
Manager, Shell International
Exploration & Production, The Netherlands



Richard Zambuni
Global Marketing Director
Geospatial and Utilities
Bentley, UK



Aisha Salem Al Khail
Abu Dhabi Company for
Onshore Oil Operations (ADCO)
UAE



Dr. Ir. Linda Carton
Assistant Professor-Spatial
Planning Nijmegen School of
Management, Radboud University
The Netherlands

 **Energy**

- Smart Grids
- Geospatial for Asset Management & Grid Analysis
- Geospatial technologies for Power Market Assessments
- GIS for managing right-of-way activities like planning and management, property appraisal, property acquisition etc
- Geospatial tools for assessing renewable energy potential of a site



Chairperson

Speakers



Prof. Dr. Ir. M (Martien) Molenaar
Professor, Geoinformatics and
Spatial Data Acquisition,
Geo-Information Science and
Earth Observation (ITC)
The Netherlands



Dr. Rob Vertessy
Director (Acting)
Australian Bureau of Meteorology
Australia



Daan van Os
Advisor
Brabant Water
The Netherlands



Dr. Dimitri Solomatine
Professor of Hydroinformatics
UNESCO-IHE
The Netherlands



Slavco Velickov
Water Industry Sales Director
EMEA, Bentley
The Netherlands



Richard Appiah Otoo
Head GIS
Ghana Water Company Limited
Ghana



Dr. C N (Chris) Bremmer
Business Line Manager
Built Environment TNO
The Netherlands



Helena Fourie
Sub-Directorate Geographic
Information & Archiving
Department of Water Affairs
South Africa



Eng. Atif A Karrani
Head of GIS Department
Sharjah Electricity & Water Authority
UAE

 **Water**

- Hydrologic & Hydraulic Analysis using GIS
- Watershed Management using Geospatial Technologies
- Water Quality monitoring using Remote Sensing & GIS
- Geospatial modeling of recharge zones
- Vulnerability analysis
- Water supply & Drainage Systems
- National Hydrography Dataset
- Hydrologic Information Systems





Enterprise Geospatial Information Solutions

We envision a world where spatial data, business data and analysis converge without the nightmare of custom programming and replacement of legacy applications.

A world in which businesses assimilate, analyze and visualize complex relationships, operational status and trends in seconds not days. This is the world of remarkable technology innovation, a world enabled by Rolta's Enterprise Geospatial Information Solutions.

- **Rolta Geospatial Fusion™** - Enterprise wide fusion of information, applications and processes
- **Rolta OnPoint™** - Enterprise wide GIS, Geospatial and Data integrator using web technologies
- **Rolta OneView Mobile™** - Synchronizes office and field workforce for enhancing productivity
- **Rolta Geomatica™** - Integrated system for Remote Sensing and Image Processing
- **Rolta Geomaging Accelerator™** - An automated image processing system enhancing speed and efficiency
- **Rolta Photogrammetry™** - Comprehensive suite of 3D digital Map production solution with multi-sensor support
- **Rolta GeoCAD™** - Public Safety Solution for Incident Management and Emergency Response
- **Rolta CommandBridge™** - Situational awareness & response solutions for maritime security & critical infrastructure protection



Rolta UK Ltd.

1210 Parkview, Arlington Business Park, Theale,
Reading, Berkshire, RG7 4TY, United Kingdom.

ROLTA Tel.: +44 (0) 1189 657 943, Fax.: +44 (0) 1189 657 944

Innovative Technology for Insightful Impact

www.rolta.com

Rolta Offices : • Rolta USA • Rolta Canada • Rolta UK • Rolta Benelux • Rolta Middle East • Rolta Saudi Arabia • Rolta India

Speakers



Ir. René van der Plas
Director Port Development & Construction Port of Rotterdam
The Netherlands



Geoff Zeiss
Director Utility Industry Program, Autodesk
USA



Frans Van Surksom
Manager Registration Landbase Volker Wessels
Telecom, The Netherlands



F M (Fred) van der Weijde
General Manager GEODAN
The Netherlands



Mr. Ir. Henri VeldhuisHoofd
Asset Management Software Grontmij Nederland B.V.
The Netherlands



Dr. Sisi Zlatanova
Associate Professor GIS Technology Section OTB
Delft University of Technology
The Netherlands



Ton de Vries
Solutions Executive Government, Bentley
USA



Caroline J Groot Msc
Senior Advisor Strategy & Policy, Cadastre Land Registry & Mapping Agency
The Netherlands



Kiran Solipuram
Telecom Consultant Infotech Enterprises Ltd
India



David Rimmington
Regional Sales Manager Cadcorp
UK

 **Construction & Infrastructure**

-  Green Construction & Infrastructure
-  Address Aging Infrastructure
-  Sustainable Infrastructure
-  Integrating GIS with CAD and BIM
-  Geospatial technologies for surveying & urban planning
-  Challenges and approaches to data standardization and systems interoperability
-  Development, design and digital mapping for various transportation verticals



Speakers



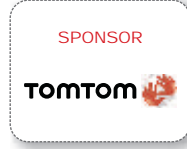
Tony Boobier
EMEA Insurance Leader IBM Business Analytics
IBM UK Ltd



Ing. A A M (Bart) Kusse
Manager Competence Consulting Manager Infotech Enterprise
The Netherlands



Maarten van Gool
Managing Director Licensing Business Unit, TomTom
The Netherlands



 **Business Enterprises**

-  Strengthening the business plan using Geospatial Technologies
-  Requirements of a successful Business Intelligence model using Geospatial technologies
-  Service Oriented Architectures
-  Inventory Control using RFID
-  Success stories
-  Challenges experienced and the way forward



Dr. Robert F Austin
Enterprise Applications Integration Manager Technology & Innovation
City of Tampa, USA



Upendra Kasam
Senior Project Manager Consulting Manager Infotech Enterprise
India



Karolina van Schroyenstein Lantman - Orlinska
Geospatial Advisor Grontmij Nederland B.V.



Hans Viehmann
Senior Sales Consulting Manager, Oracle Deutschland
Germany



Karl Mullins
Principal Consultant Assimi18 Limited, U.K.



Joachim Figura
CEO, CISS TDI GmbH
Germany



Daniel Shannon
Sr. Program Manager Telus, USA



Chairperson



Keith Masback
President
USA Geospatial Intelligence
Foundation
USA



Col. Brunner
German GeoInfoService
Lead
USA



Col. John Kedar
Commander Joint Aeronautical &
Geographical Organisation
(JAGO), MoD
UK



Adam Denman
Vice President
Strategic Business
Development Europe
Intermap, Germany



Robert Zitz
Senior Vice President &
ISR Chief Systems
Architect, Science
Applications Intelligence
Corporation
USA



**Air Cdre Mark Ashwell
(Retd)**
Vice President
Business Development & Strategy
DigitalGlobe
USA



Dr. A Stewart Walker
Product Director
BAE Systems
USA



**Dr. Christopher
K Tucker**
Chairman and
Chief Executive Officer
The MapStory Foundation
USA



Sanjay K Agarwalla
Chief Executive Officer
Integrated Digital Systems
India



**Lt. Col. Ali Mohammad
Al Shehhi**
Manager, Falcon Universal
Ground Station
Space Reconnaissance Centre
UAE



LTG Michael Flynn
Deputy Director
National Intelligence for
Partner Engagement
USA



Richard R Smith
Force Information Manager
British Transport Police
UK



**Paulo Sergio
Melo de Carvalho**
Brigadier General
Head of Second Deputy
Chief of Army Staff EME
Brazilian Army General Staff
Brazil



Steve P Wallach
Senior Vice President
Product Integration
GeoEye
USA



Joerg F Herrmann
Senior Strategy Manager
Astrium GmbH
Germany



Terry Ford*
Director
J2 United States Africa Command
USA



Col. Andries Mahapa
Senior Staff Officer
South Africa Army
Engineer Formation
South Africa

Defence & Intelligence

- The GEOINT Dimension of Socio-Cultural Dynamics
 - Commercial Imagery for Geointelligence
 - GEOINT for National and International Security
 - Geospatial technologies for managing emerging threats
 - Geospatial for Command & Control systems
 - Geospatial technologies for Terrain Mapping & Modeling
 - Emerging geospatial technologies for meeting security challenges
- Latest Surveillance technologies for Border Management



Chairperson

Speakers



M Christian Braux
Head - Mineral Resources
BRGM
France



Piyush Pandey
Chief Executive Officer
EICE
India



Marksuel Bastos
Manager- Technology
Geodesy Geo-processing
and Oceanography
Petrobras S.A, Brazil



Francois Robida
Deputy Head Information
Systems & Technologies
BRGM, France



Puguh Sarwanto
Head - GIS Development
Total E&P
Indonesia



Prof. Dr. F D (Freek) van der Meer
Chairman & Vice-Dean
Dept of Earth System Science
University of Twente, (ITC), The Netherlands



Matthew Mccauley
Managing Director
Atlas (Aust) Pty Ltd
Australia



Dr. Kumar Navulur
Director - Product Management
DigitalGlobe
USA

Mining & Exploration

- Geospatial technologies for Area Selection
- Fieldwork Planning & Project Designing using Geospatial Technologies
- Geospatial tools for subsurface investigation
- Spatial Modeling
- Benefits accrued-ROI



- The freshest maps
- The most accurate real time traffic
- The largest database to predict traffic flow

Chairperson

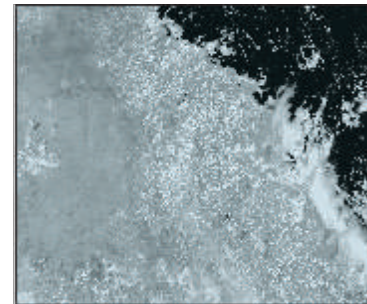


Prof. Dr. Ing. Christian Heipke
 Managing Director, Institute of Photogrammetry and GeoInformation
 Leibniz Universitaet Hannover, Germany



GIS Ready Information From Imagery

- Role of photogrammetry and imaging in providing GIS ready information
- Advances in imaging and photogrammetry
- Applications in car navigation, disaster management & monitoring of fast growing urban centers
- Current limitations
- Prospects of future developments



Speakers



Prof. Dr. Ing. Peter Reinartz
 Head of Department, German Aerospace Center, Remote Sensing Technology Institute, Germany



Prof. Dr. Ing. Dieter Fritsch
 Head Institute for Photogrammetry Germany



Prof. Dr. Ir. M G (George) Vosselman
 Professor in Geo-Information Extraction with Sensor Systems University of Twente, ITC The Netherlands



Dr. Werner Mayr
 Managing Director Blom Germany



Prof. Stefan Nebiker
 Professor, School of Architecture Civil Engineering and Geomatics University of Applied Sciences Switzerland



Prof. Ian Dowman
 Emeritus Professor of Photogrammetry and Remote Sensing & Editor-Europe Geopatial World, UK

Chairperson



Prof. Dr. Ir. P J M (Peter) van Oosterom
 Professor, Delft University of Technology OTB, Section GIS Technology The Netherlands



Dr. Jantien Stoter
 Associate Professor & Consultant Geo-ICT TU Delft & Kadaster & Geonovum, The Netherlands



5D Modeling

- Principles of 5D modeling, full integration of 3D space, time and scale
- Applications in practical situation of (subsets) of 5D models
- True vario-sacle maps explained in detail: 2D/3D space and scale
- 3D space meets time in 4D Geological models
- Requirements for 4D modeling and analysis software



Dr. Michiel van der Meulen
 Chief Geologist TNO Geological Survey The Netherlands



Wouter Brokx
 Managing Director Imagem BV The Netherlands



Dr. Ir. Martijn Meijers
 Postdoc Researcher Delft University of Technology The Netherlands

Chairperson



Prof. Josef Strobl
Director Centre for Geoinformatics
University of Salzburg
Austria

Speakers



Prof. Henk Scholten
Chief Executive Officer
GEODAN
The Netherlands



Euro Beinat
Vice President Location Solutions
Zebra Technologies
The Netherlands



Steven Ramage
Executive Director
Marketing and Communications
Open Geospatial Consortium



Florian Fischer
Researcher, Austrian Academy of Sciences
Institute for Geographic Information Science
Austria



Dr. Bernd Resch
Visiting Professor
University of Osnabrueck
Germany

**Real Time Geoinformatics
Live Geography**

- Need for real-time geoinformatics
- Latest sensor technologies, positioning & tracking technologies- CCD cameras, GPS/INS systems /map matching algorithms
- Telegeoinformatics
- Integrating GNSS positioning data to detect rapid motion and long-term movement trends
- Benefits of using real-time geographic information
- Role of geospatial technologies in supporting time-critical applications



Chairperson



Jan Willem van Eck
Director of Strategy, Esri Nederland & President, Geo-Informatie Nederland
The Netherlands

Speakers



Ingrid Vanden Berghe
Administrator-General
National Geographic Institute
Belgium



Prof. Karl Donert
President
European Association of Geographers, UK

European Digital Agenda

- Geospatial technologies as an important tool for environmentally sustainable and innovative Europe
- Regional trends in policy and legislation in promoting the use of ICT and geospatial technologies in particular
- Barriers to successful implementations
Way forward for promoting the use of geospatial technologies for sustainable Europe
- Role & importance of Standards & Interoperability



Tanguy De Lestré
Senior Public Affairs/Policy Advisor and Coordinator
AGORIA



Dr. Ir. M A Salzmans
Director Strategy & Policy Cadastre
Cadastre Land Registry & Mapping Agency
The Netherlands



Dr. Paul C Smits
Spatial Data Infrastructures Unit
Institute for Environment & Sustainability
Joint Research Centre, Italy



Chairperson



Mark E Reichardt
President & CEO
Open Geospatial Consortium (OGC)
USA



Peter ter Haar
Director of Products
Ordnance Survey
UK



Martin Lechner
Chief Technology Officer
Wikitude GmbH
Austria

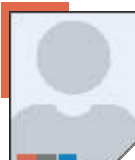
Speakers



Juergen Wahlen
Image Analyst
European Union Satellite Centre
Spain



Dr. rer. Thomas H Kolbe
Professor
Technical University of Berlin
Germany



Andreas Wytzisk
CEO
52°North GmbH
Germany



Andrew Turner
Chief Technology Officer
GeoIQ
USA

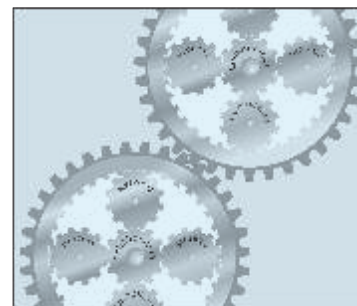


Olivier Cottray
Coordinator-Information Services
Geneva International Centre for
Humanitarian Demining (GICHD)
Switzerland



Nextgen Standards & Interoperability

- The power of interoperability and standards
- Ability of open standards to reduce costs
- Ease in integration of new data sources and technologies
- Improving interoperability standards to support next-generation assessments
- What's ahead for geospatial interoperability and standards
- Challenges and way forward

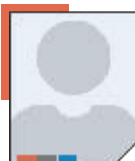


Chairperson



Prof. Dr. Ir. A K (Arnold) Bregt
Professor Geo-information
Science, Centre for Geo-Information
Wageningen University
The Netherlands

Speaker

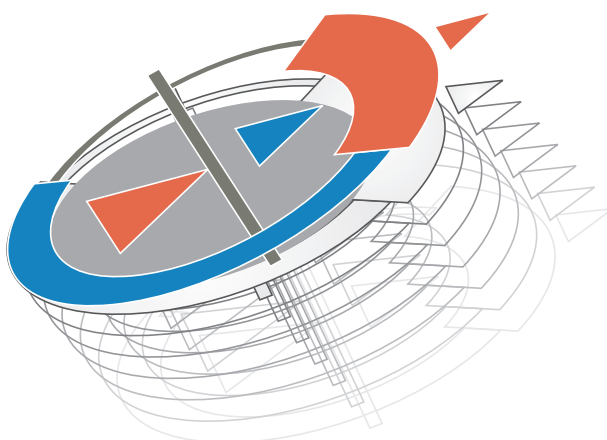


Graham Hunter
Chief Executive Officer
3D Laser Mapping Ltd
UK



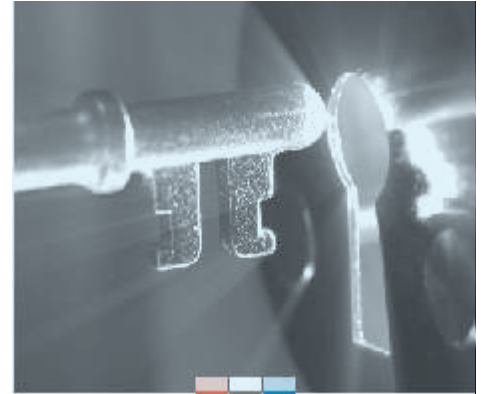
Mobile Mapping

- Mobile mapping with UAV Technology
- Integrated mobile mapping systems
- Mobile 3D laser mapping
- Mobile multi-sensor systems
- 3D mobile mapping and GIS integration
- Mobile mapping applications
- Opportunities and challenges in mobile mapping for on-line services and consumer application



Open Source

- Legal, technical and business perspectives of Open Source
- Role of the OSGeo Foundation with respect to highest quality software and security of investment into Open Source
- Off-the-shelf private Open Source solutions ready to use in any environment
- User cases with best-of-breed Open Source software for maximizing return on investment

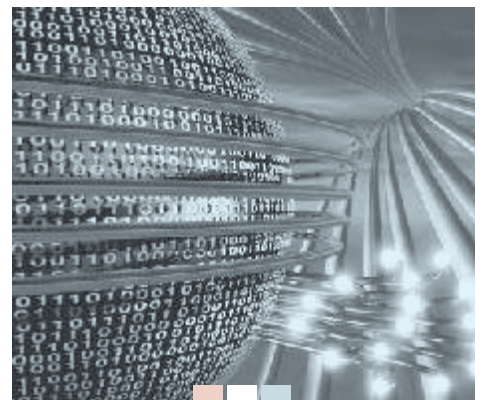


Cloud Computing

- Cloud Computing Architectures
- Innovative Cloud Applications and Experiences
- Security and Privacy in Clouds
- Business Process and Workflow Management in Clouds
- Cloud-bridging and Cloud-bursting
- Service-Oriented Architecture and Cloud Computing

Cyber Infrastructure & Social Networking

- Overview and potential future directions of geospatial cyberinfrastructure
- Geospatial technologies for facilitating social networking for CRM
- Need for real time data
- Broadcasting via RSS or GEORSS
- Using a web-based GIS to engage citizens in development processes
- Understanding spatial arrangement of social and economic networks
- Use of geospatial technologies in currently available social networking sites
- Challenges experienced



Technical Sessions

A number of Technical Sessions will be held at the Geospatial World Forum 2012 on the following topics:

- Environmental Management
- Utility
- Surveying and Mapping
- Spatial Law
- Intellectual Property Rights
- 3D Modelling
- Photogrammetry
- Cartography
- GNSS & Location Based Services
- Remote Sensing & LiDAR
- Spatially Enabled Government
- Web & Enterprise GIS
- And many more...

For queries, write to papers@geospatialworldforum.org

Poster Session

Poster sessions are an innovative way to present research information to the audience. Geospatial World Forum will host a dedicated poster session where research papers submitted on various technical themes will be presented in forms of attractive posters and generate discussions around the presented research.

Industry Technology Tracks

Geospatial World Forum shall host a number of industry technology tracks, which are customized sessions wherein the private industry can showcase their new products, services and technologies to the audience from varied verticals. The information exchange will mutually benefit the audience as well as the industry.



www.bentley.com/GWF

THE 3D GIS FOR INFRASTRUCTURE – EXPERIENCE THE POWER OF BENTLEY MAP

GIS is going 3D and the benefits are enormous. With Bentley Map, you'll gain the additional advantage of a GIS that's both intrinsically 3D and optimized for the rigorous demands of sustaining infrastructure. Bentley Map supports 3D objects in Oracle Spatial natively, has smart 3D object editing tools, and executes advanced 3D spatial analyses as well as standard 2D routines.

Featuring an extended API, the latest version of Bentley Map is optimized for developers and enterprise deployments alike. It comes in three editions to meet a range of user needs – from light editing and review, to 2D and 3D spatial information creation and analysis, to advanced raster image management and long transactions using Oracle Spatial.

To find out how Bentley Map is advancing GIS for infrastructure, visit www.bentley.com/GWF or call +353 14 36 46 97.

CHECK OUT THE NEW BENTLEY MAP EDITIONS

Bentley Map® PowerView
Bentley Map® *
Bentley Map® Enterprise

*runs stand-alone or on MicroStation®



© 2011 Bentley Systems, Incorporated. Bentley, the "B" Bentley logo, Bentley Map, and MicroStation are either registered or unregistered trademarks or service marks of Bentley Systems, Incorporated or one of its direct or indirect wholly owned subsidiaries. Other brands and product names are trademarks of their respective owners.

The geospatial industry has been evolving and maturing as one of the mainstream business having its own identity in world economy. Undoubtedly, this has been possible only by innovations and excellence brought forward by geospatial technology developers, professionals, end users and policy makers. In order to recognize and encourage such efforts, **Geospatial World – Your Geospatial Industry Magazine** published by Geospatial Media & Communications has been conferring awards and recognitions for exemplary innovations and practices in the global geospatial industry.

During Geospatial World Forum 2012 too, Geospatial World would confer the **Geospatial Excellence and Innovation Awards** to special achievements for the following categories:

- **Geospatial Application Excellence Awards** – for exemplary usage of geospatial tools in various fields (Governance, Infrastructure, Public safety, Utilities, Design and Engineering, Environment, Agriculture, Mining and Exploration, Transportation management, Business Intelligence, Insurance, Disaster Management)
- **Geospatial Technology Innovation Awards** – for innovations and developments in geospatial technology e.g. Remote Sensing, Photogrammetry, LiDAR, 3D Modelling, Cartography, Web GIS, Mobile mapping, Enterprise GIS, Topographic surveying instruments, GIS ready imagery etc.
- **Geospatial Policy Implementation Awards** – Policy makers and implementers whose work directly impacts in development of geospatial science, technology and business may submit their nominations for this category.



Last date for Nominations: 15th January 2012

For details, visit <http://awards.geospatialmedia.net/>



Securing your society by speedy analyses of the Earth's images and geoinformation acquired from spaceborne, airborne, ground-based and even shipborne sensors.

Save Our Planet



PASCO CORPORATION
www.pasco.co.jp



Contact us: Global Business Control Division
intl_info@pasco.co.jp

Exhibition

Stir up excitement and interact one-on-one with people who matter. Take time to explain what exactly you offer and how it is better than anything else in the market. With your own exhibition space you can:

- Make deals with senior level representatives and generate valuable leads
- Demonstrate your technology to attentive and curious delegates
- Network with and impress potential partners
- Maintain and strengthen your standing within the industry
- Create a buzz around your company's latest developments

Exhibition Dates 24 - 26 April 2012

Exhibition Fees (per Sqm) 400 Euro

For space booking, write to info@geospatialworldforum.org



Registration

Delegate Category	Early registration (before 31 st Jan 2012)	Late Registration (1 st Feb – 20 th Apr 2012)	Spot Registration (after 20 th April 2012)
Regular Govt/Private (1)	Euro 500	Euro 600	Euro 700
Academia/student (1)	Euro 325	Euro 400	Euro 500
Two Days registration (2) (valid for only 25th, 26th, 27th)	Euro 300	Euro 400	Euro 500
Exhibition visit (3)			Euro 100

1. Includes access to all conference sessions, exhibitions, conference bag including the conference material, coffee breaks, lunches and receptions organised as part of the main conference.
2. Includes access to conference and exhibition, conference bag including the conference material, coffee breaks, lunches and receptions organised as part of the main conference on the chosen day.
3. Includes only the access to the exhibition.

Group Discounts: A discount of 10% shall be given for a group of 5 or more delegates registering from one organization. Students are not entitled for any discounts.

Pre-conference activities are on invitation only.

To register online, visit

<http://www.geospatialworldforum.org/2012/registration/form.htm>

VISIT US IN BOOTH #69!

INTERMAP[®]

Intermap[®] helps customers worldwide solve their mapping challenges via our geospatial services, NEXTMap[®] 3D elevation data, and cloud-free orthorectified imagery.

- **NEXTMap:** Our off-the-shelf data archive provides immediate access to over 18 million km² of high-resolution, terrain data worldwide.
- **IFSAR Data Collection:** All weather, day/night collection capability ensures your data will arrive on-schedule and within budget.
- **Data Fusion:** Intermap can provide high-accuracy 3D mapping solutions which may be comprised of various data sources.
- **Web Services:** Save time, reduce costs, and leverage your existing investment in GIS infrastructure by accessing the data you need through our Web Services.

Learn more about what Intermap has to offer!

Plenary Speaker:

Todd Oseth, President and CEO

Dialogue and Exchange

Forum Speaker:

Adam C. Denman, Managing Director

Visit us online at
www.intermap.com



Conference Venue - Amsterdam RAI Convention Centre

Each and every year, Amsterdam RAI bids a hearty welcome to more than two million visitors. The combination of excellent service, perfect accessibility, the exciting city of Amsterdam for business and pleasure is what makes Amsterdam RAI unique. Inspiring people, that's the aim of the RAI.

The RAI is located in the south of the Amsterdam business quarter in the immediate vicinity of the World Trade Centre and only three kilometres from the historical centre of the city. Amsterdam's international airport, Schiphol, which has direct flights to over 200 cities in 97 countries, is nearby. The train from the airport takes eight minutes to reach Amsterdam RAI station. Trams and buses to the city centre stop in front of the RAI.

Amsterdam RAI

Europaplein 22, NL 1078 GZ, Amsterdam

How to get to Amsterdam RAI

Please view the Amsterdam RAI website: www.rai.nl.

After you have clicked the button for English (English flag at top right of home page), go to Route & Contact at the top right of the page. There you will find a pdf document "How to Reach Amsterdam RAI"

Currency

The currency in The Netherlands is EURO (EUR). For up-to-date exchange rates, please refer to a currency exchange site on the Internet, e.g. www.xe.com/ucc

Tourist Information

For tourist information on Amsterdam and The Netherlands, please refer to the following websites: <http://www.iamsterdam.com> and <http://www.holland.nl>

Visa

Don't forget to check with your travel agency, or with the Dutch consulate or embassy in your country, if you need a visa to enter the country.

Hotel accommodation

Accommodation bookings can be made on-line at: <http://www.geospatialworldforum.org/2012/accommodati.htm>



CONFERENCE CONTACTS

EXHIBITION & GENERAL ENQUIRY

Annu Negi info@geospatialworldforum.org

CONFERENCE PROGRAMME & PAPERS

Aditya Chopra papers@geospatialmedia.net

REGISTRATION

Rajesh Kumar registration@geospatialmedia.net

AWARDS

Dr. Hrishikesh Samant hrishikesh@geospatialmedia.net

REGIONAL CONTACTS

EUROPE

Yogesh Nagar + 31 684 427 822/ 684 562 665
yogesh@geospatialmedia.net

ASIA PACIFIC

Kavitha Seras + 601 7673 8523
kavitha@geospatialmedia.net

SOUTH ASIA

Prashant Joshi + 91 9650 133 177
prashant@geospatialmedia.net

MIDDLE EAST

Abhishek Kotangle + 971 50 5598 020
abhishek@geospatialmedia.net

AFRICA

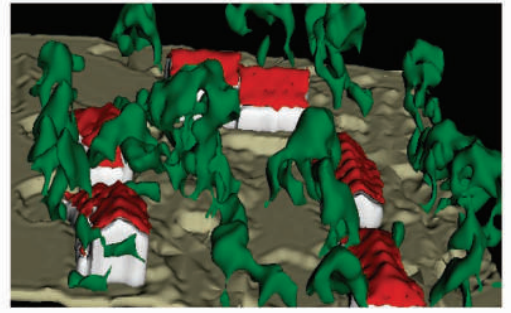
Niraj + 27 82 634 343
niraj@geospatialmedia.net

LATIN AMERICA

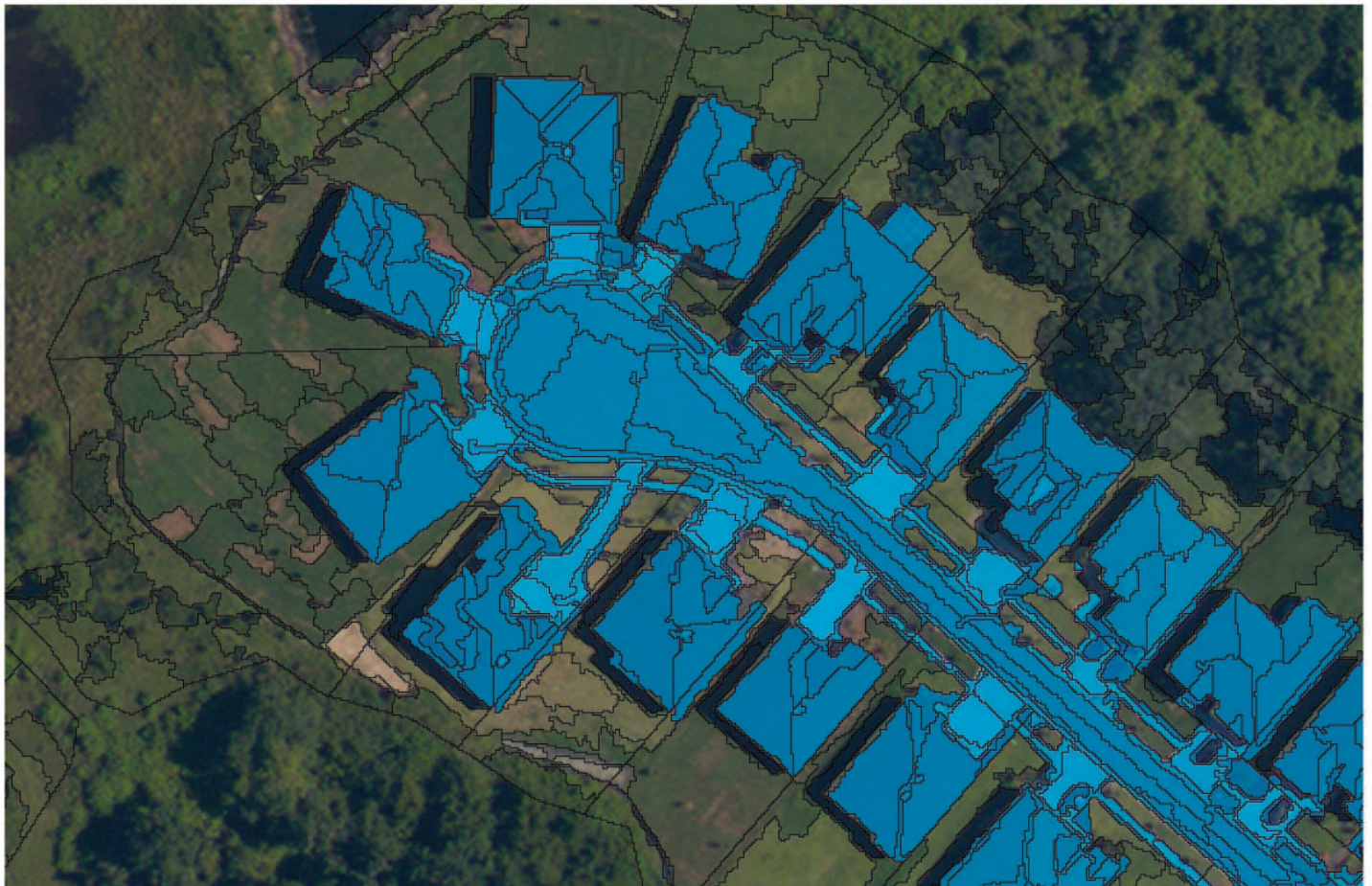
Natalia Rodrigues + 55 21 7912 0505
natalia@geospatialmedia.net

NORTH AMERICA

Vaishali Dixit + 91 9313 292 284
vaishali@geospatialmedia.net



Unlimited data sets. Clouds of points. Billions of pixels.
Automate your analysis. Avoid paralysis.



IMPORT RAW GEODATA. EXTRACT PURE GEOINTELLIGENCE.

In all but the world's most remote locations, there is no shortage of geospatial data. Far more challenging is the ability to analyze and extract key information from multiple and massive data sets.

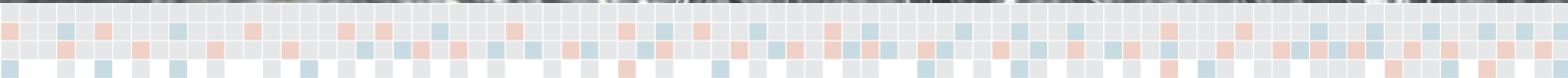
Trimble eCognition software imports raster images, laser scanner point clouds, and GIS vectors. It then lets you add analysis logic to pinpoint earth surface changes over time.

This new 64-bit standard for object-

based image analysis is the latest effort from Trimble to bring improved predictability, efficiency, and productivity to local development, regional initiatives, and large government projects.

Advance without limitations. Visit ecognition.com/products





ORGANISER



Geospatial Media and Communication (formerly GIS Development) works towards raising the profile and expanding the horizons of the geospatial industry through creating awareness, connecting industry communities, policy advocacy, and business development initiatives.

CO-ORGANISER



The Netherlands' Cadastre, Land Registry and Mapping Agency harbours many years of expertise regarding land registration, mapping, land use and corresponding IT setup. As the international context of land administration continues to grow, the scope of Kadaster's activities abroad continues to widen.