

GEOSPATIAL WORLD FORUM



15-19 January, 2018, Hyderabad, India

ONE GLOBAL PLATFORM – FOUR KEY EVENTS!



**GE
BUIZ**
S U M M I T

15-16 January, 2018

**AI & IOT
SUMMIT**

18-19 January, 2018



GE 4SDGs
Addressing Agenda 2030

18-19 January, 2018



LOCATION
— WORLD —

18-19 January, 2018

[CLICK HERE TO KNOW MORE](#)



GIS Enabling Smart Cities & More Efficient Transportation

Nick Land

Esri Inc.

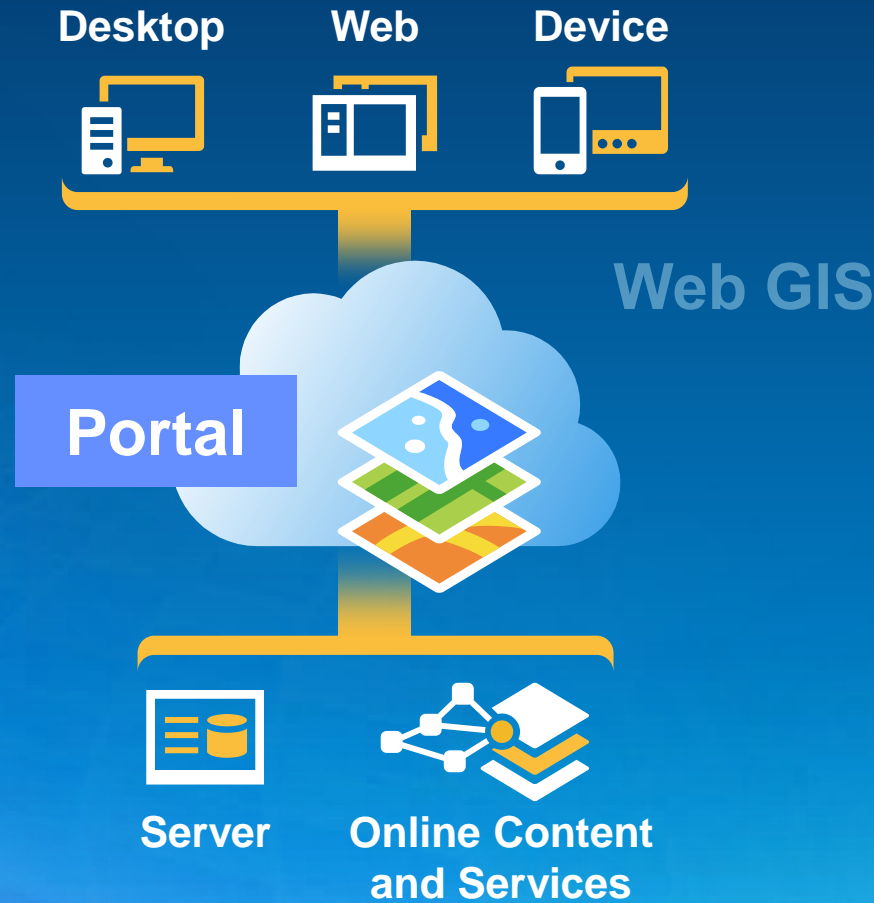
What is a Smart City?

A smart city uses information and communications technology (ICT) to enhance its livability, workability and sustainability. In simplest terms, there are three parts to that job: collecting, communicating and "crunching." First, a smart city *collects* information about itself through sensors, other devices and existing systems. Next, it *communicates* that data using wired or wireless networks. Third, it "*crunches*" (analyzes) that data to understand what's happening now and what's likely to happen next.

GIS as a Platform

Enabling Smart Cities

Simple
Integrated
Open



*Available in the Cloud . . .
. . . and On-Premises*

Web GIS Integrates All Data Types

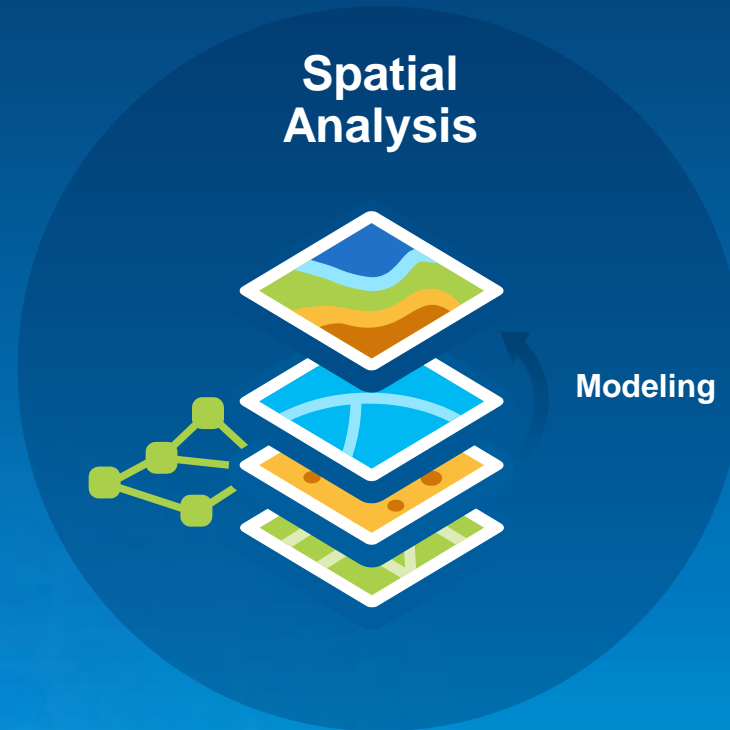
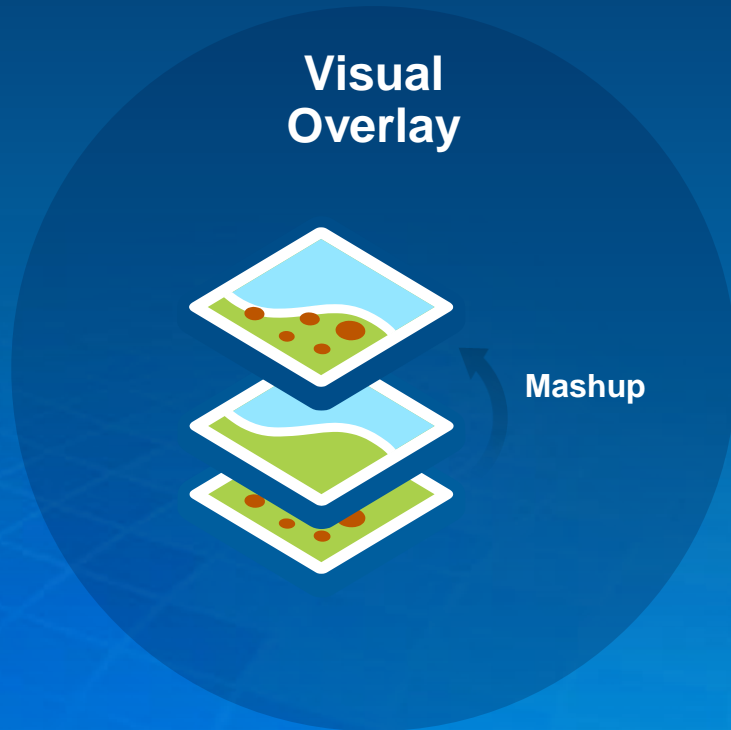
With Web Maps and Web Services



Providing a New Medium for GIS

Web GIS Dynamically Integrates Information

Combining and Analyzing Information



Helping to Discover and Understand Relationships . . .

Foundational Apps

Making the Platform Pervasive

Supporting Common Tasks

- Collection / Editing
- Viewing
- Mapping
- Analysis
- Awareness
- Communication

* Offline Use

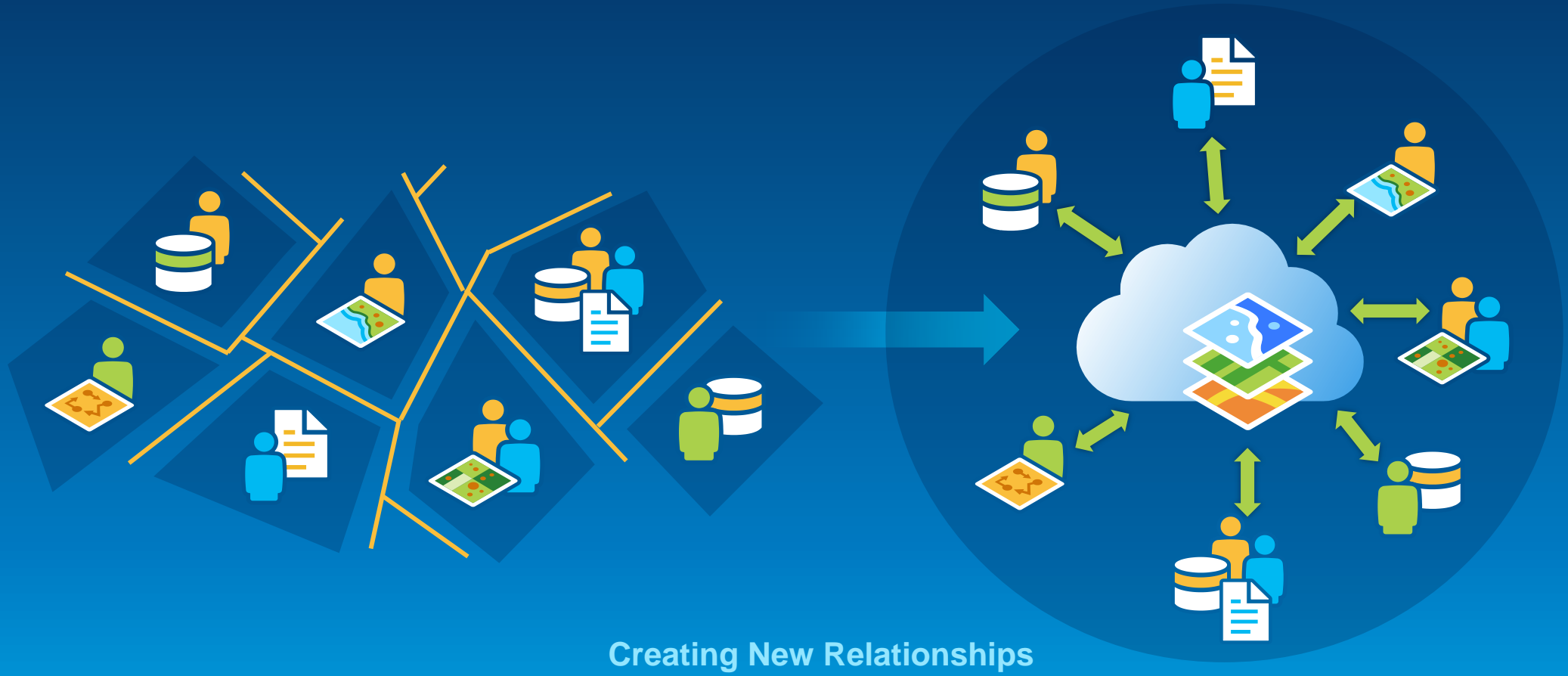
Multiple Devices



... A Core Part of the Platform

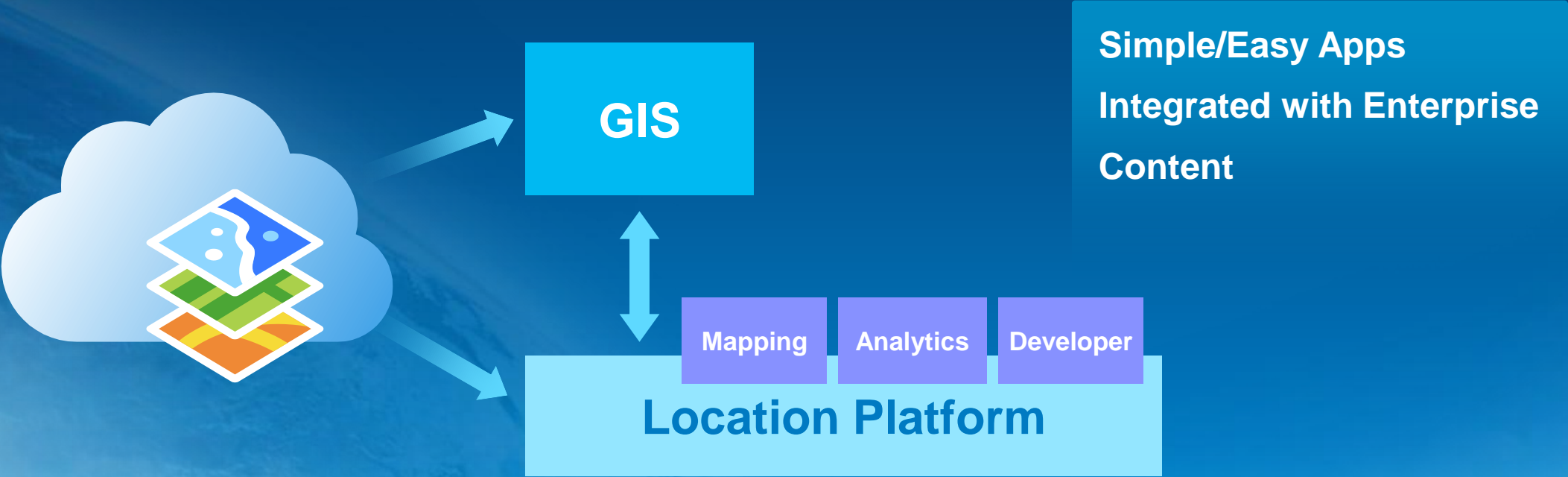
Web GIS Integrates Organisations and People

Breaking Down the Barriers



... Supporting Innovation, Integration & Collaboration

The Platform Supports Two Communities



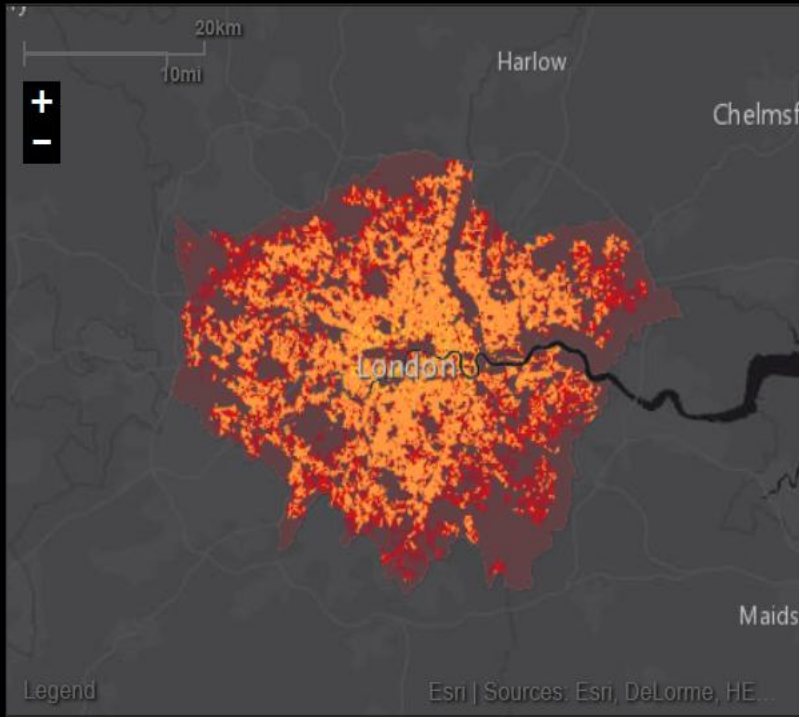
... Geocentric workflow and location enablement

(Geo)Smart Cities and Efficient Transportation

Good transportation systems that are efficient, environmentally friendly, and move people quickly, comfortably and affordably to their destinations.

Population Density

London

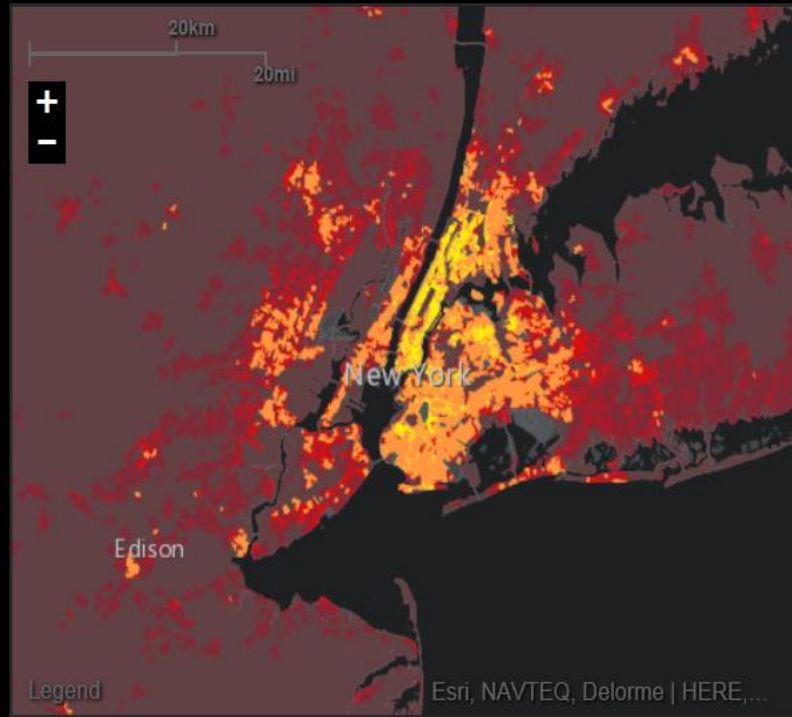


"In mid-2007 it was estimated that London's population was 7.56 million (up 44,000 on the previous year). Of these, 3 million lived in inner and central London and 4.56 million in the outer boroughs," states [The Mayor's London Plan](#). When viewing the entire London area including the outer boroughs, one can clearly see the concentration around the city center.

Census data reveals that population density varies noticeably from area to area. Small area census data do a better job depicting how where the crowded neighborhoods are.

In this map, the yellow areas of highest density range from 30,000 to 150,000 persons per square kilometer. In those areas, if the people were spread out evenly across the area, there would be just 4 to 9 meters between them. Very

New York

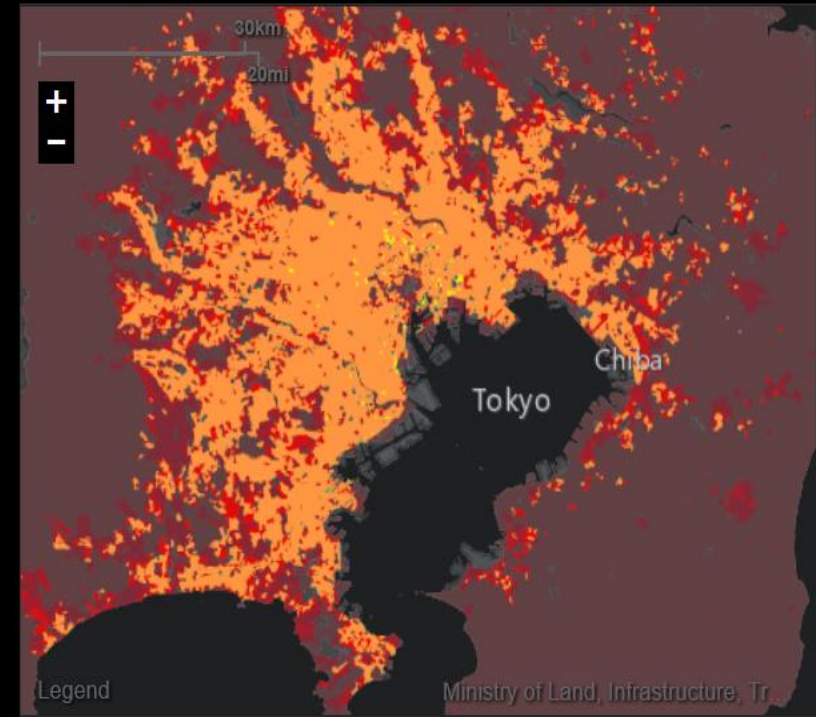


"When you imagine people living densely packed, you may think of New York City. But a [new report](#) from the Census Bureau shows California is home to the most densely populated metro areas in the United States," according to [KPBS](#).

That ranking takes the population of the entire metropolitan area, and divides it by the land area of the entire metropolitan area, to provide a summary figure for the metro area (not the city). New York City by itself still leads the nation in terms of population density due to its 8+ million strong residents.

Small area census data reveals that population density varies noticeably from neighborhood to neighborhood, e.g. near Hollywood. Census data reveals that population density varies noticeably from area to area. Small area census

Tokyo



As one of the world's largest cities, Tokyo's population density shows interesting patterns due to the industrial areas around the bay, historic district just west of there, and areas of population growth nestled in among the mountains nearby.

Census data reveals that population density varies noticeably from area to area. Small area census data do a better job depicting how where the crowded neighborhoods are.

In this map, the yellow areas of highest density range from 30,000 to 150,000 persons per square kilometer. In those areas, if the people were spread out evenly across the area, there would be just 4 to 9 meters between them. Very high density areas exceed 7,000 persons per square kilometer. High density

Themes

Work

- Commercial
- Industrial
- Predominant Occupations

Movement

- Roadspeed
- Traffic**
- Highway Access
- Airports
- Railroads

People

- Housing Density
- Population Density
- Senior Population
- Youth Population

Public

- Open Space
- ParkScore

Systems

- Current Temperatures
- From the ISS
- Imagery
- Urban Footprint
- Winds
- New Development

Cities

Abu Dhabi

Atlanta

Auckland

Bogota

Boston

Chicago

Delhi

Dublin

Fresno

Hamburg

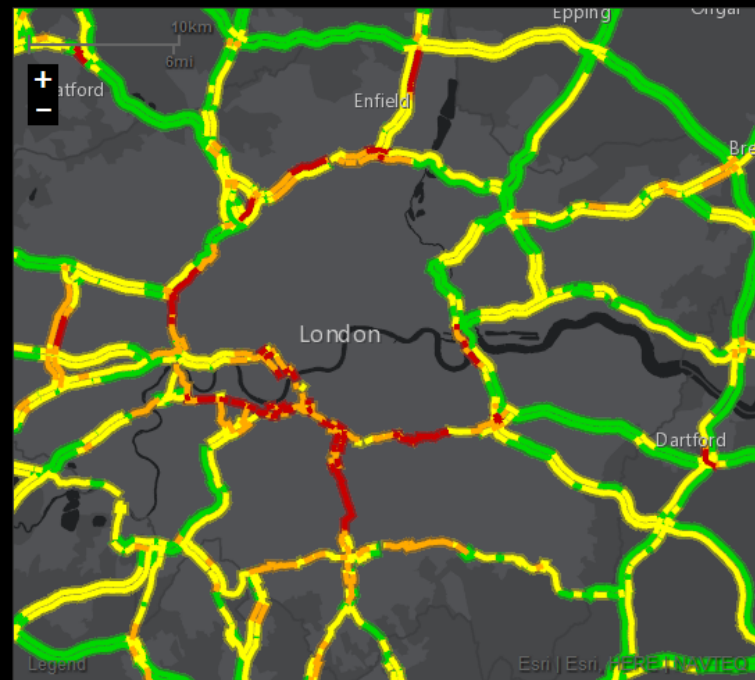
Honolulu

Houston

Job

Traffic

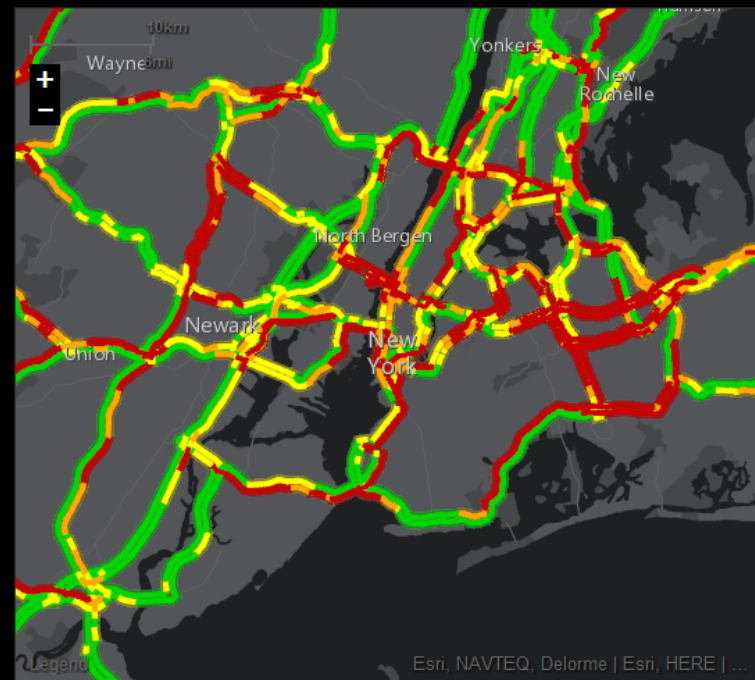
London



- Stop and Go
- Slow
- Moderate
- Free Flow

This map shows the traffic conditions you can expect at this time of day in this city.

New York



- Stop and Go
- Slow
- Moderate
- Free Flow

This map shows the traffic conditions you can expect at this time of day in this city.

Auckland



- Stop and Go
- Slow
- Moderate
- Free Flow

This map shows the traffic conditions you can expect at this time of day in this city.

“Let the Games be about sport, not transport”

London 2012 Olympics: capital braced for travel chaos as Games Lanes open on Heathrow's busiest day

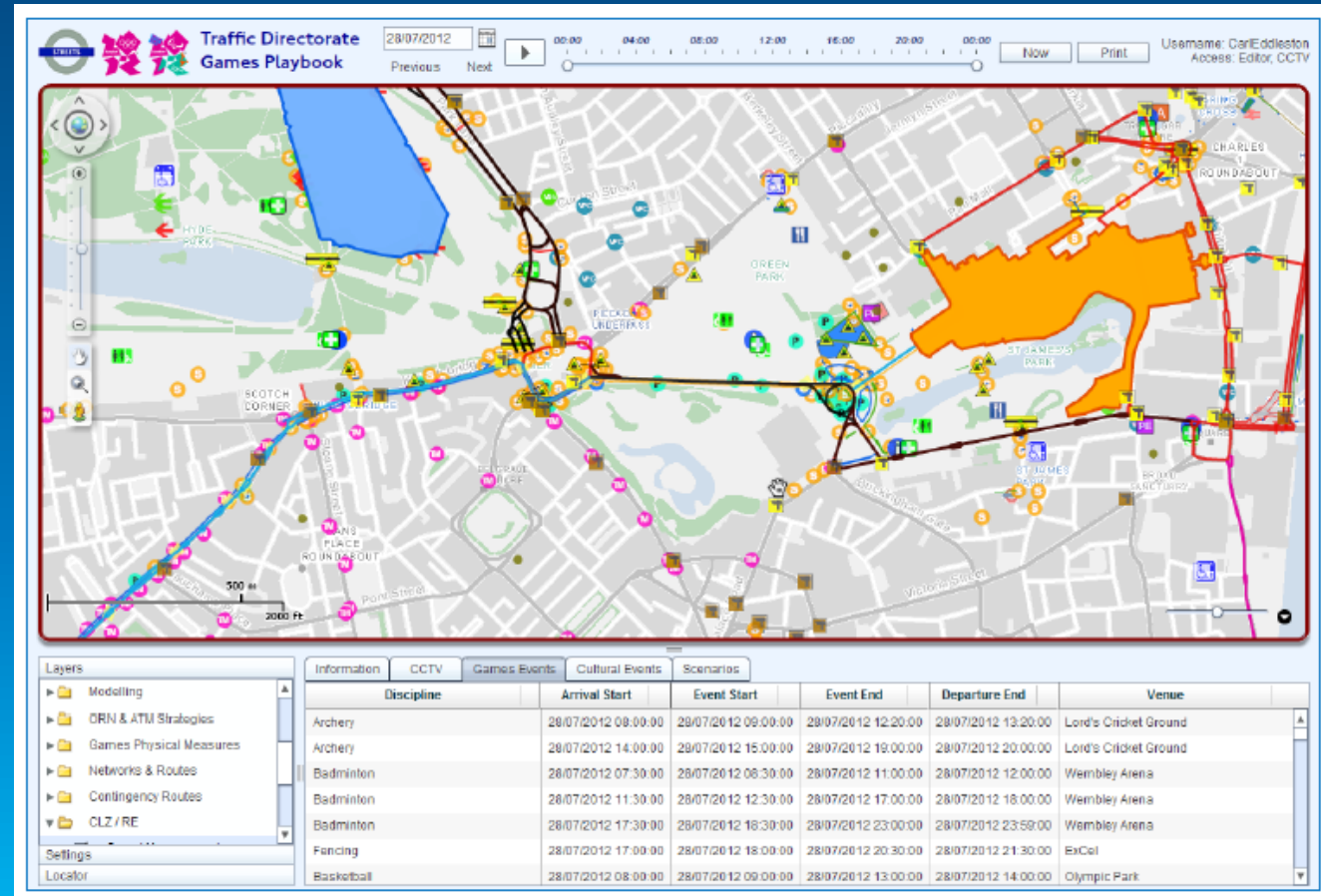
The capital faces its first major transport challenge of the London 2012 Olympics as athletes begin to arrive and the first Games Lane comes in to operation.



London Olympics

Transport for London – GIS was key in “Keeping London Moving & Open for Business”

- One platform for operational planning
- Used by 500 staff
- Static & dynamic data
- Live CCTV images
- Modelling
- Outcome:
 - No athlete or official was late;
 - 95.7% success for spectators.

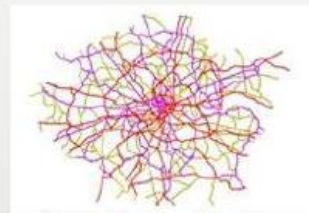




Featured Maps



**Cycle Superhighway
(Existing & Proposed)**



**Networks, Routes and
Areas**

SFM

- | | |
|---|--------------------------------------|
| <input checked="" type="checkbox"/> VMS | <input type="checkbox"/> Toucan |
| <input checked="" type="checkbox"/> Junction (MF) | <input type="checkbox"/> Puffin |
| <input checked="" type="checkbox"/> Junction (MP) | <input type="checkbox"/> Dual Puffin |
| <input checked="" type="checkbox"/> Pedestrian | <input type="checkbox"/> CCTV |
| <input checked="" type="checkbox"/> Pelican | |
| <input checked="" type="checkbox"/> Dual Pelican | |

**Site Fault Management
(SFM)**



**Pragmatic Schemes:
Current to June 2016**

The Surface Playbook will be an invaluable information tool for operational planning providing a platform to merge multiple Surface systems and allow the integration of new and ever changing information. This step change in ability will be put into place to allow fast, accurate and comprehensive data to be available across all departments.

Use the Featured Maps as a base to start adding layers, or you can create a custom map using the 'Make a map' option.

[Make a Map](#)

[Find Groups](#)

[Search for Data](#)

[For more detail on data content please click here](#)



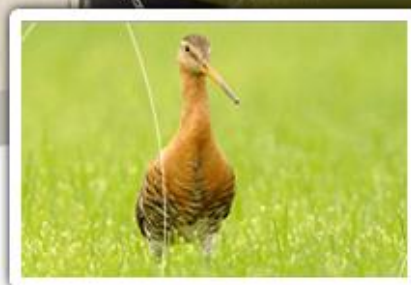
Port of Rotterdam

- Europe's busiest port
- Gateway to 500 million consumers
- 90,000 workers





Globespotter: Aquarama's



Natuurborging



Luchtfoto



Veiligheid

Welkom op het POI van het havenbedrijf. Het Port Object Information platform stelt zich tot doel om alle geo-informatie welke gerelateerd is aan de haven beschikbaar te stellen. Via het PortMaps Portal heeft u direct toegang tot de verschillende informatie producten en de PortMaps Viewer.


Easy access to information

y/poragg/home/gallery.html


HOME GALERIJ KAART GROEPEN MIJN CONTENT MIJN ORGANISATIE Eijkelenboom,

Galerij


Kaarten Web-apps Mobiele apps



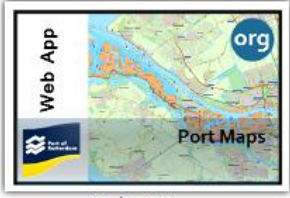
Luchtfoto's vergelijken




eNoses




Trailer PortMaps




Hydro Meteo




Bolderkaart




Veiligheid



Milieu



Contractobjecten



Administratieve gebieden

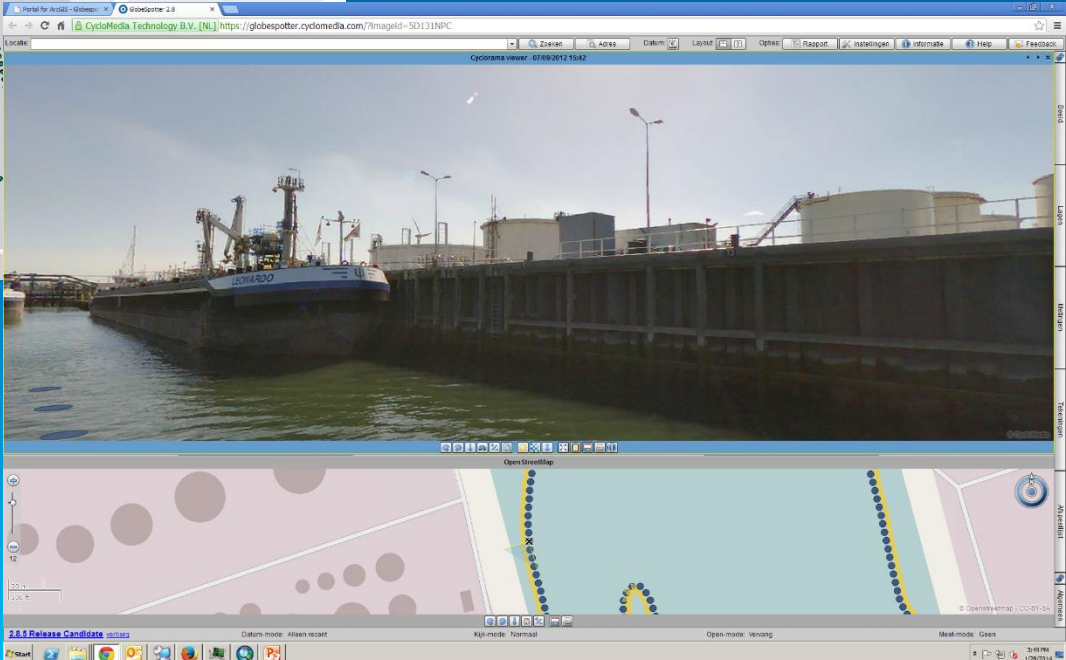
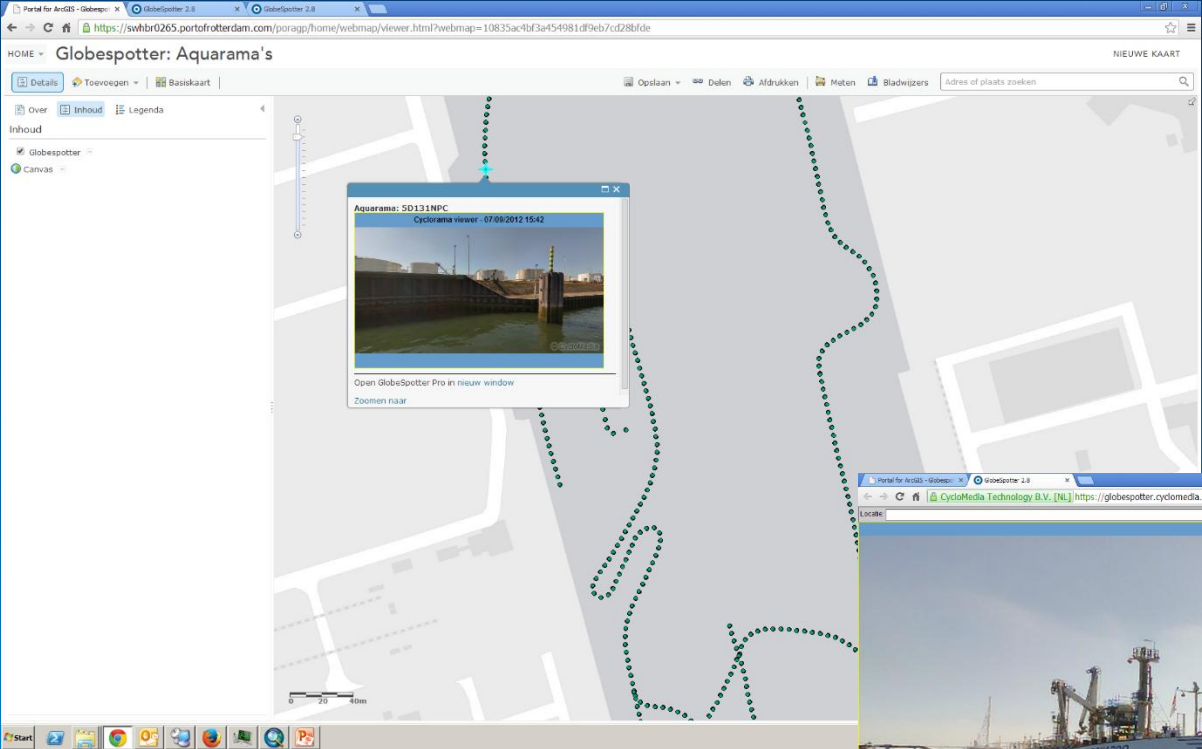
Zoeken...

Meest weergegeven items

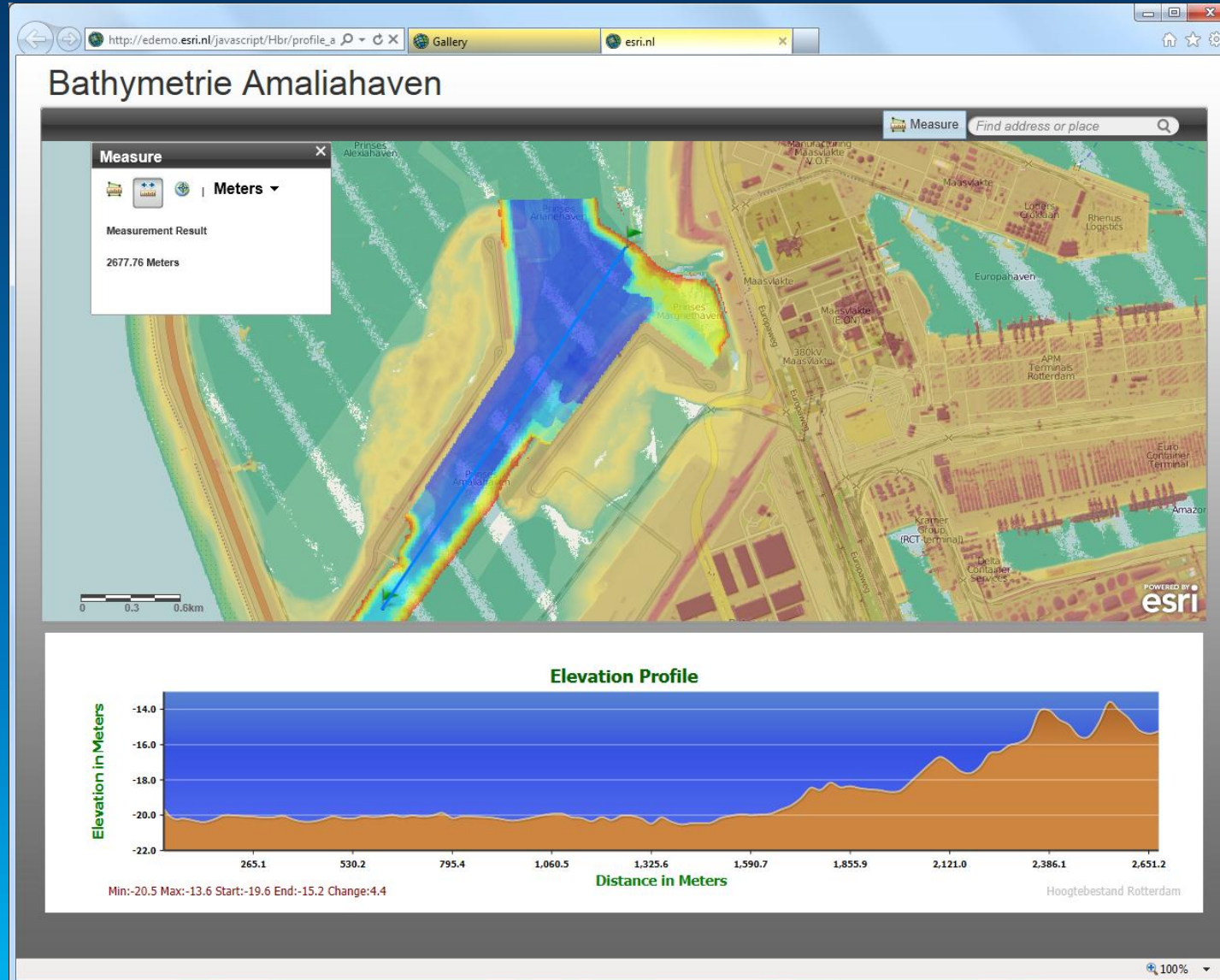
Recent toegevoegde items

Groepen

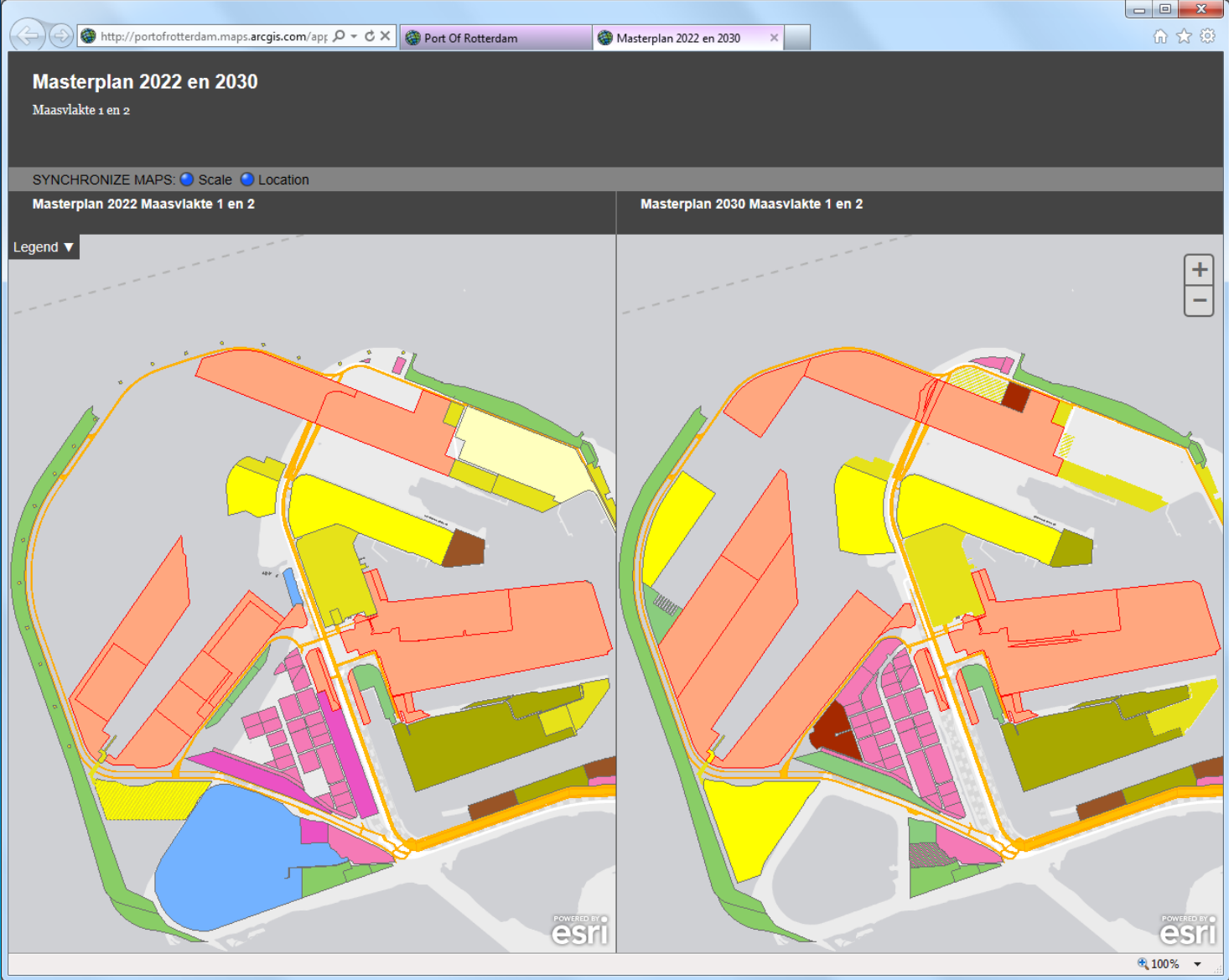
Integration with Cyclorama



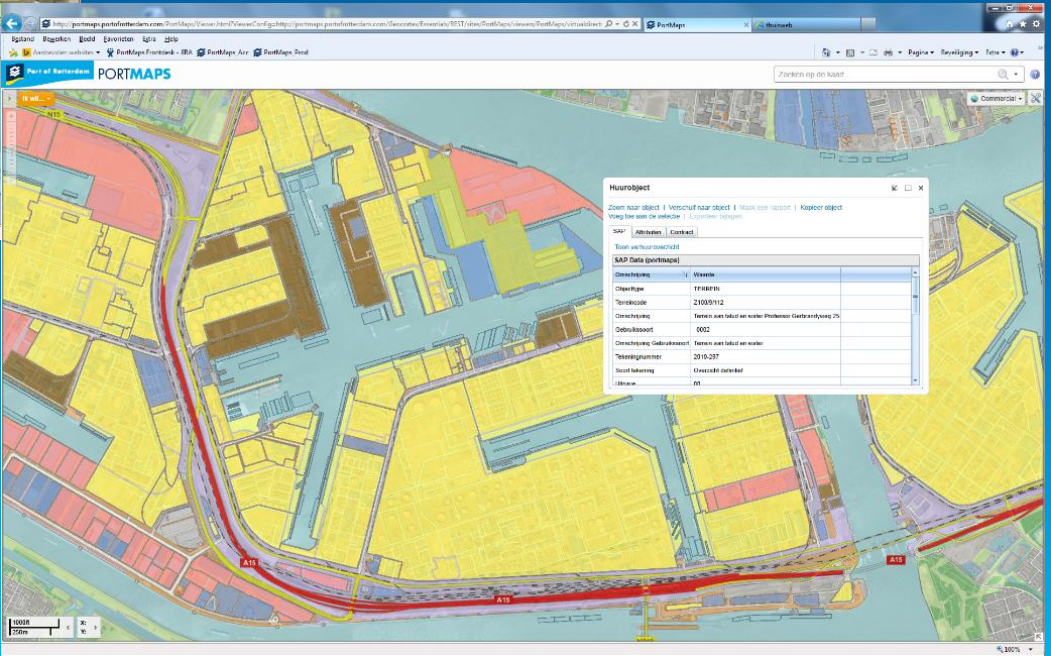
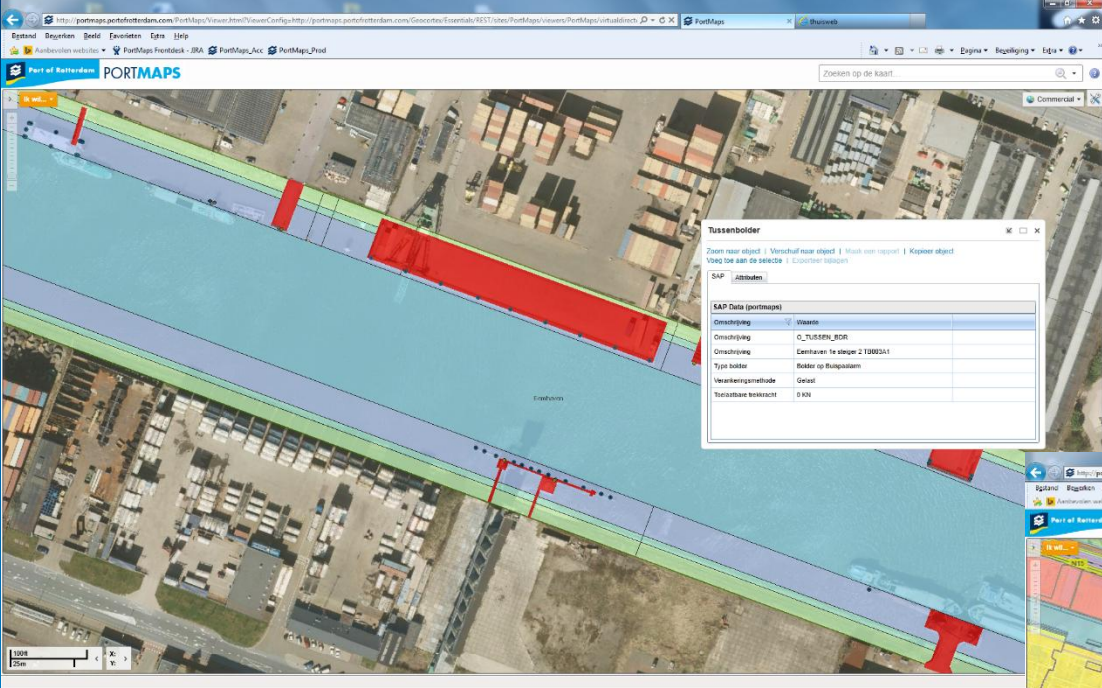
Bathymetry



Masterplan Scenarios



Integration with Business Systems





Understanding our world.